



COMPANY OVERVIEW,
PRODUCT & COLOR CATALOG



COMPANY OVERVIEW

DEDICATION TO CUSTOMERS	4
COMPANY OVERVIEW	6
LOCATIONS	8
FORMULA OVERVIEW	12
TURNKEY PACKAGING	14
QUALITY CONTROL	16
SUSTAINABILITY	18
CONTRACT MANUFACTURING	20
REGULATORY	22
TERMS & CONDITIONS	24

DEDICATION TO CUSTOMERS IS OUR #1 PRIORITY

Since 1908, Keystone Industries has been a leader in high-tech formulations, with over a century of experience in producing cutting-edge materials that exceed industry standards. Our mission is to provide top-quality materials that enhance performance, reliability, safety, and efficiency. We are committed to continuous innovation, delivering products that meet the evolving needs of professionals and consistently exceed customer expectations.



AT KEYSTONE COSMETICS & SCIENCES, WE ARE THOROUGHLY COMMITTED TO THE GOAL OF TOTAL CUSTOMER SATISFACTION. WE ACHIEVE THIS BY PROVIDING **QUALITY PRODUCTS, PROMPT DELIVERY, COMPETITIVE PRICING, AND KNOWLEDGEABLE CUSTOMER SERVICE.**





“ KEYSTONE’S LONGEVITY CAN BE ATTRIBUTED TO OUR **UNIQUE PRODUCT LINES, COMPETITIVE PRICING, AND CUSTOMER SATISFACTION.** ”

COMPANY OVERVIEW

Keystone Industries is a privately held company with a diverse portfolio of subsidiaries specializing in the manufacturing and distribution of cosmetics, dental, purified and sterile water. Our cosmetic manufacturing division, **Keystone Cosmetics & Sciences**, produces high-quality stock and custom fingernail coating formulations.

We are dedicated to exceeding customer expectations, measuring our success through customer loyalty and consistent growth. Our clients benefit from direct access to our entire team—including research, manufacturing, and support—ensuring a seamless experience and collaborative product development process.

LOCATIONS



CORPORATE HEADQUARTERS

480 S. Democrat Road
Gibbstown, NJ 08027
Phone: (1) 856 663 4700
Email: info@krandp.com



CHERRY HILL OFFICE

616 Hollywood Avenue
Cherry Hill, NJ 08002
Phone: (+1) 856 663 4700



CALIFORNIA OFFICE

7530 Suzi Lane
Westminster, CA 92683
Phone: (+1) 714 890 3900



KEYSTONE EUROPE BV

Batavenweg 5-7 5349BC
Oss, The Netherlands
Phone: (+31) 412 693 100
Email: sales@keystone-europe.nl



C7 PRODUCTION

9 Chemin de la Chatte,
87290 Saint-Sornin-Leulac, FR
Phone: (+33) 5 55 76 20 83
Email: info@centre7.com



CHINA - GUANGZHOU DISTRIBUTION CENTER

Unit 1505, North Tower, World Trade Center
No. 371-375 Huanshi-East Road,
Guangzhou, 510095, China
Phone: (+86) 20 8776 7990, (+86) 20 8776 4959
Email: sales@keystone-asia.com



“ THESE PRODUCTS WERE PERFECTED USING
INPUT FROM **TOP NAIL ARTISTS AND
EDUCATORS FROM ALL OVER THE WORLD.** WE
CONTINUOUSLY MODIFY AND DEVELOP NEW
MATERIALS TO REMAIN THE INDUSTRY LEADER. ”



FORMULA OVERVIEW



UV/LED GELS

UV/LED gels are a versatile alternative to the traditional liquid/powder systems. These materials offer the benefit of reduced odor, quick application and natural appearing enhancements. We offer a range of gels for every technician level. Keystone Cosmetics & Sciences offers a full line of UV/LED, traditional, soak off and GelPolish™ gels including base, builder, and top gels. Highly pigmented color gels are also available for all nail art needs. Many of our products are suitable for retail sales.



SPECIALTY COATINGS

Keystone Cosmetics & Sciences offers a line of air-dry nail coatings. Our materials include base coats, top coats and nail strengtheners for both artificial and natural nails.



POLYMERS & MONOMERS

All polymers are manufactured using high quality raw materials. Our polymers are designed for all performance levels and offer the best control and product clarity available.

Specialty formulated monomers are used in combination with standard polymers to create the finest nail enhancement products. When used together as a system, these polymers and monomers yield superior results.

In addition to clear polymers, a range of colored polymers are available. These include shades of pink, natural, white, and highly pigmented polymers.



ACCESSORIES

To complement our enhancement products, Keystone offers a full range of complementary nail accessories. Key products include preps, primers, accelerators, cuticle oils, and product removers. These materials were developed to supplement your private label line so you can rely on Keystone Cosmetics & Sciences for all of your product needs.

— Many of our products are suitable for retail sales —



KEYSTONE COSMETICS & SCIENCES HAS DEDICATED YEARS TO DEVELOPING INNOVATIVE PRODUCTS TAILORED FOR THE **COSMETIC, DENTAL, AND PHARMACEUTICAL INDUSTRIES.**

TURNKEY PACKAGING

In addition to producing bulk finished goods, Keystone Cosmetics & Sciences is able to provide turnkey packaging for many of our products. Our filling capabilities include polymers, liquids, air-dry coatings, nail lacquer, and UV/LED gels.

Keystone Industries' Cherry Hill, Gibbstown, and EU facilities house multiple automated filling lines that accommodate various sized bottles and jars with ease and speed. This allows us to offer a competitive menu of turnkey packages.

We offer a wide range of packaging with low MOQ's. Our standard range consists of clear and amber glass, plastic bottles, and jars with different sizes, coatings, and types of closures. If we do not carry something in our standard range, we will procure the perfect packaging solution to complete your collection.



FROM INITIAL CONCEPT THROUGH FINAL PRODUCTION, OUR TEAM COLLABORATES CLOSELY WITH YOU TO ENSURE PRECISE FORMULATION, RIGOROUS QUALITY CONTROL, AND OPTIMAL PACKAGING SOLUTIONS—DELIVERING A FINISHED PRODUCT THAT MEETS THE **HIGHEST INDUSTRY STANDARDS.**

QUALITY CONTROL

Quality is built into the design of Keystone's products. Raw materials are carefully selected and formulations are vigorously tested for functionality and stability, prior to being commercially manufactured.

Once production begins, the Keystone Quality Control team uses advanced knowledge of product chemistries, production processes, and testing methodologies to ensure that every outgoing batch meets our customers' high quality standards.

Our comprehensive quality process combines analytical, physical property, and functional testing. Each batch is tested at several key points throughout the manufacturing process to verify product consistency and performance.

IF CUSTOMER QUALITY REQUIREMENTS EXPAND BEYOND THE SCOPE OF KEYSTONE'S CAPABILITIES, KEYSTONE HAS RELATIONSHIPS WITH SEVERAL OUTSTANDING CONTRACT ANALYTICAL LABORATORIES WITH QUICK TURNAROUND TIMES FOR NON-STANDARD TESTING.



CHEMICAL ANALYSIS (COMPOSITION, IDENTITY, PURITY)

- ✓ High Performance Liquid Chromatography (HPLC)
- ✓ Gel Permeation Chromatography (GPC)
- ✓ Infrared Spectroscopy (FTIR)
- ✓ Gas Chromatography (GC-FID and MS)
- ✓ UV-VIS Spectroscopy
- ✓ pH Meters



PHYSICAL PROPERTY TESTING

- ✓ Color: Spectrophotometer and visual assessment
- ✓ Particle Size Analysis: Laser Light Diffraction of wet and dry samples
- ✓ Viscosity/Thickness: rotary and cone and plate viscometers
- ✓ Film characteristics: gloss, hardness, thickness
- ✓ Volatile content
- ✓ Density
- ✓ Optical clarity/haze
- ✓ Thermal and UV stability



FUNCTIONAL TESTING

- ✓ Application/workability
- ✓ Feel
- ✓ Odor
- ✓ Setting and cure time

SUSTAINABILITY

KEYSTONE UNDERSTANDS THE **IMPORTANCE OF SUSTAINABILITY**, BOTH FOR OUR BUSINESS AND FOR OUR PLANET.

WE BELIEVE THAT:

- ✓ All employees deserve a safe, inclusive, and supportive work environment
- ✓ We must protect and give back to our local communities
- ✓ We must minimize our impact on the environment
- ✓ We must strive for ethical growth



▶ SUSTAINABILITY INITIATIVES AND FUTURE GOALS



SOLAR PANEL INSTALLATION: GIBBSTOWN

Solar panels were installed to cover our parking lot and walkway. They will generate 2.5 million kWh, enough to power 230 homes, and are equivalent to reducing power plant carbon dioxide emissions by > 3.6 million pounds of carbon dioxide .



GREEN TEAM:

All our US manufacturing facilities have a “Green Team” to implement and promote sustainability initiatives. They have revamped recycling programs, implemented waste governance and reduction processes, converted to LED lighting, and begun planning an aquaponics system to support our Gibbstown cafeteria. Green Team members also share monthly sustainability tips to help raise awareness.



KEYSTONE CARES:

This program supports our local communities with charitable donations and volunteering. Our future goal is to dedicate 1% of our gross sales to improving our community.



RESEARCH AND DEVELOPMENT:

Keystone developed a fingernail care line of bio-based accessories and removers, and will continue to develop more eco-friendly chemistries and packaging options.

THINK GREEN
REDUCE. REUSE. RECYCLE.

CONTRACT MANUFACTURING

COSMETIC PRODUCTS

In addition to offering our standard product line, Keystone Cosmetics & Sciences helps customers develop specialty products exclusive to their own line. Our research and development staff will work with you to formulate products that meet your requirements and specifications.

We employ a full staff of laboratory chemists, engineers, and quality control scientists. Our staff is available to customers for technical support and product development inquiries.

Minimum order quantities are required for specialty formulations and vary depending on the type of product developed.

PHARMACEUTICAL SPECIALTY FORMULATIONS AND TOLL MANUFACTURING

Keystone Cosmetics & Sciences is equipped to run small and intermediate sized batches of different chemistries. Our experienced laboratory and production staff enables us to tailor the work to your precise specifications. Simple projects can involve running your desired batch size of an already developed process. More complex projects can involve everything from statistical of experiments, to small-scale batches, to full-scale batches, and process development. Various processing and purification techniques are also available to meet your exact requirements.

Product design and scale-up projects can be run (or performed) in compliance with FDA cGMP and our ISO 13485:2016 certified quality system requirements. Non-disclosure agreements can be put in place to protect your proprietary information. Our Cherry Hill facility is ideal for running batches requiring stability testing, process validation or regulatory compliance.





QUALITY. COMPLIANCE. EXCELLENCE.

REGULATORY

Keystone Industries operates a Quality Management System that complies with the FDA's current Good Manufacturing Practices (cGMP) and is certified to ISO 22716 for Cosmetics and ISO 13485 for Medical Devices. Our knowledgeable regulatory team ensures adherence to international regulatory requirements across all activities.

We provide comprehensive product support, including the creation and upkeep of Product Information Files (PIFs) and Cosmetic Product Safety Reports (CPSRs) for cosmetic products sold Globally. These files contain confidential information as required by the FDA's Modernization of Cosmetics Regulation Act of 2022 (MoCRA) and the European Union's Cosmetics Regulation (EC) No. 1223/2009. This includes detailed product formulations, safety and hazard assessments, and raw material technical documentation.

All PIFs and CPSRs are securely maintained on file at Keystone Industries and are made readily accessible to regulatory authorities upon request.

Keystone Industries ensures compliance with EC Regulation 1907/2006 concerning the Registration, Evaluation, Authorization, and Restriction of Chemicals (REACH). Our regulatory and environmental, health and safety teams actively manage obligations under REACH by monitoring substance use, securing required registrations, and maintaining up-to-date documentation on chemical safety and usage.

We collaborate closely with suppliers to obtain necessary safety data and ensure that all substances used in our formulations are pre-registered or registered as appropriate. Safety Data Sheets (SDS) are maintained for all applicable raw materials, and substance evaluations are conducted to assess risk and regulatory status.

Keystone Industries maintains thorough records to support REACH compliance and is prepared to provide documentation to European authorities upon request, ensuring continued market access and adherence to evolving regulatory requirements.

TERMS & CONDITIONS

SAMPLES AND PACKAGING

- Samples of all products are available for testing purposes.
- All products are sold in bulk packaging and turnkey.
- Upon request, filling and complete turnkey is available. Minimum order quantities are required. Contact your representative for more information.

ORDERING

- Goods will be sold only to established wholesalers and distributors.
- Minimum order values must be met before an order is processed.
- Special Orders: We will gladly manufacture non-stock specialty items for our preferred customers. Special orders are subject to a minimum order quantity and are not returnable.

SDS AND REGULATORY

SDS for all products are included with each shipment and made available electronically upon request. PI files are maintained by KCS and are available to regulatory authorities in the event of an audit. Customers are responsible for following all federal, state and local cosmetic labeling and packaging laws.

PRICING

Pricing is dependent on overall order quantities and packaging. Price is subject to change with notice.

RETURN POLICY

All returns require prior return authorization and may be subject to restocking fees. Contact your sales representative for return authorization and a list of instructions on returning damaged or defective product.

DELIVERY WITHIN THE US

KCS allows all domestic customers to ship via the carrier of their choice. If no shipping company is specified on the purchase order, we will use the carrier with the best shipping rate. All freight charges are to be paid by the customer and orders are shipped Freight Collect. Additional services via UPS and FedEx are available depending on the sizes and types of products shipping. Export drop ships are available for a \$100 export processing fee.

DELIVERY OUTSIDE THE US

All EU deliveries must be paid in Euros without exception. All orders ship Ex Works Gibbstown, NJ or Oss, The Netherlands. All China deliveries must be paid in RMB without exception. All orders ship Ex Works Guangzhou, China.

PAYMENT OPTIONS WITHIN THE US

Open accounts may be established following approval of a complete credit application. Open account invoices are payable 30 days from date of invoice. Past due accounts are subject to a finance charge of 1.5% per month. Payments may be made by check, electronic transfer/ACH, wire transfer, or credit card (Mastercard, Visa, American Express). Credit card transactions are subject to a 1.5% fee. All orders are payable in U.S. dollars. Returned checks are subject to a \$25 fee.

PAYMENT OPTIONS OUTSIDE THE US

All orders are to be prepaid by wire transfer or credit card. Visa, MasterCard, and American Express are accepted.

Credit card transactions are subject to a 1.5% surcharge. All orders ship Ex Works from Gibbstown, NJ; Oss, The Netherlands; or Guangzhou, China.



PRODUCT OVERVIEW

A MESSAGE	28	COATINGS	60
GEL SYSTEMS	30	BASE COATS	62
BUILDER GELS	32	TOP COATS	63
HIGH VISCOSITY TUBE GELS	36	ACCESSORIES	64
WHITE GELS	38	NAIL ART	66
OVERLAY GELS	40	PREPS & PRIMERS	68
COLOR GELS	46	ACTIVATOR	70
GELPOLISH™ BASES	48	REMOVERS	70
TOP GELS/GELPOLISH™ TOPS	50	WIPING SOLUTIONS	71
ACRYLIC SYSTEMS	54	MISCELLANEOUS	72
MONOMERS	56	CUTICLE OILS	74
POLYMERS	58	OILS & CARE MISTS	76

A MESSAGE FROM OUR SVP, SALES & MARKETING

At Keystone Cosmetics and Sciences, we believe our success is deeply rooted in the partnerships we build with our clients. It's customers like you who make our work meaningful, fulfilling, and rewarding.

Over the years, we have remained committed to understanding your needs and challenges, striving to deliver products and solutions that not only meet—but exceed—your expectations. Every member of our team, from product development to customer support, is dedicated to ensuring your experience with us is seamless, responsive, and enriching. In today's fast-paced market, consistency and reliability are essential—and I am proud of our team's continued efforts to uphold these standards.

Beyond service, we deeply value the opportunity to collaborate with you. Your feedback and insights are invaluable as we innovate and grow. It is your honest input and shared vision that inspires us to continually refine our product formulations—ensuring they not only perform, but also uphold the expected quality for your brand's success.

As we look ahead, please know that our commitment to innovation—and to you—remains unwavering. Our goal is to be more than a trusted supplier—we strive to be a proactive, purpose-driven partner who champions your brand's mission with integrity and care.

Thank you for the privilege of serving you. We are honored to be part of your brand's journey, and we look forward to many more years of partnership and shared success.

With sincere appreciation,



SERENE CURRY

Senior Vice President, Sales & Marketing



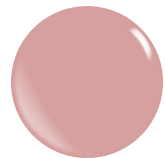


GEL SYSTEMS

BUILDER GELS

ECO UV/LED BUILDER GEL

ECO UV/LED Builder Gel is a lower heat gel with good adhesion, strength, and shine. These gels are self-leveling and easy to apply.



Pink



Transparent Pink



Clear

PROLINE GEL

Proline Gels feature lower heat emission and superior adhesion. These self-leveling gels are ideal for sculpting over tips and forms. Thanks to their advanced self-leveling properties, Proline Gels provide complete control, ensuring no run-off into the cuticle area and leaving a smooth, even surface that minimizes filing.



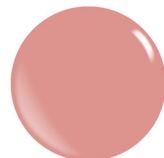
Cover Cashmere Pink



Cover Dusty Rose



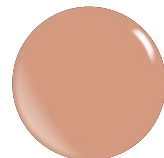
Cover Delicate Rose



Cover Elegance



Cool Cover Pink



Cover Sensual



Cover Coral



Pink



Clear



Milky White



FLEXR GEL

FlexR Gels are formulated as low heat, flexible builder gels, offering you the perfect balance of adhesion and workability. Providing the ultimate flexibility, allowing you to cater to diverse application needs with ease. Our collection features four viscosities, ensuring that you can rely on the exceptional performance from natural nail overlays to tip and form extensions.



VISCOSITIES

THINNER

THICKER

FLEXR GEL

FLEXR GEL

FLEXR GEL

FLEXR GEL

1

2

3

4

Most leveling. Thinnest of the formulas. This gel fits into the category of a non-filing gel.

Self levels will hold a smile line better than Flexr 1.

Sculpting gel that self-levels.

Sculpting gel that has a different texture than the other Flexr Gels. Becomes thinner/will self-level the more you work with it.

BUILDER GELS

TECH CHART

	PROLINE GEL	FLEXR GEL 1	FLEXR GEL 2	FLEXR GEL 3	FLEXR GEL 4	ECO GEL
EXTENSIONS	SHORT/MEDIUM	SHORT/MEDIUM	SHORT/MEDIUM	SHORT/MEDIUM	SHORT/MEDIUM	LONG
SELF LEVELING	YES	YES	YES	NO	NO	YES
ONE PHASE	•	•	•	•	•	•
LOW HEAT	•	BEST	BEST	BEST	BEST	•
MULTIPLE COLORS AVAILABLE	•	•	•	•	•	•
CONTAINERIZATION						
HEMA FREE	•	•	•	•	•	
TPO FREE	•	•	•	•	•	•
EU LABEL FOR PROFESSIONAL USE ONLY	•	•	•	•	•	•

HIGH VISCOSITY TUBE GELS

PRE-FILLED GEL IN TUBES

Keystone has a complete range of high viscosity gels that can be filled into tubes, syringes, or pots. Some of these technologies are patent pending.

Handling and packaging these gels requires custom equipment and handling expertise to achieve consistent quality and application.

REACH OUT TO YOUR SALES REP FOR MORE INFORMATION



WHITE GELS

listed in order of least to most opaque

FRENCH WHITE GELS

ULTRA WHITE

used to create creamy bright white tips

EXTREME WHITE

COMING SOON
used to create brilliant white tips and detailed nail art

FRENCH WHITE BUILDERS

SOFT WHITE

used for subtle white tips

ANGEL WHITE

used to create a subtle natural nail

UV

FLEXR CINDERELLA*

FLEXR 1
FLEXR 2
FLEXR 3
FLEXR 4

used to create milky overlays, babyboom and soft white tips

FLEXR WHITE*

FLEXR 1
FLEXR 2
FLEXR 3
FLEXR 4

used to create crisp white tips

PROLINE MILKY WHITE

used to create crisp white tips

UV LIGHT CURING ONLY



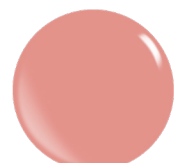
OVERLAY GELS

EASY OFF OVERLAY GEL

Easy Off Overlay Gel is a natural nail overlay gel that has great flexibility and adhesion. It adds strength to the natural nails, allowing them to grow. Easy Off Overlay Gel can be soaked off in acrylic remover for easy removal.

FIBER OVERLAY GEL WITH VITAMINS

Fiber Overlay Gel is a thicker overlay/base that contains synthetic fibers. This adhesive gel fills up ridges of the natural nail. Enjoy durability and beauty that lasts for 2 weeks. This gel is infused with Vitamin E and Calcium.



Rosetta



Rosy Pink



Rose Nude



Barely There



Nearly Naked



Pink



Sweet Pink



Milky



Cinderella

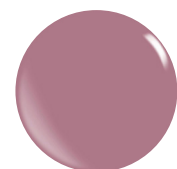


Clear



BUILD IT UP

Build It Up gels are low viscosity, soakable UV/LED gels for a natural nail overlay and short extensions.



Cover Pink



Pink Pretty



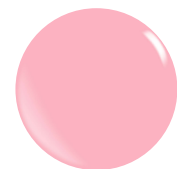
Baby Boom



Fairy Dust



Natural Pink



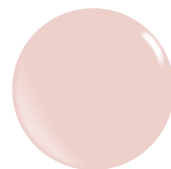
Sweet Pink



Pink Cloud



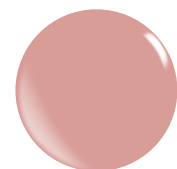
Shimmer Peach Puff



Cover Cream



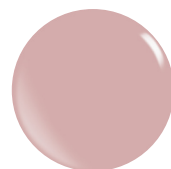
Pink with Gold Flakes



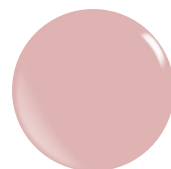
Peach Bubble



Pale Pink



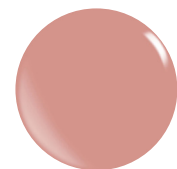
Nude



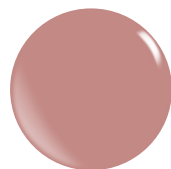
Strawberry Cream



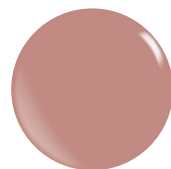
Nude Tan



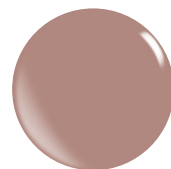
Summer Sweet



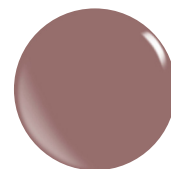
Marshmallow



Soft Maroon



Cover Tan



Warm Almond



Clear



Pearl Pink



Mauve Rose



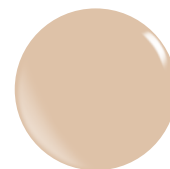
Sparkling Angels with Multi Flakes



Sparkling Angels



Pearl Gold



Soft Beige



Latte



Cinderella



Cinderella SH

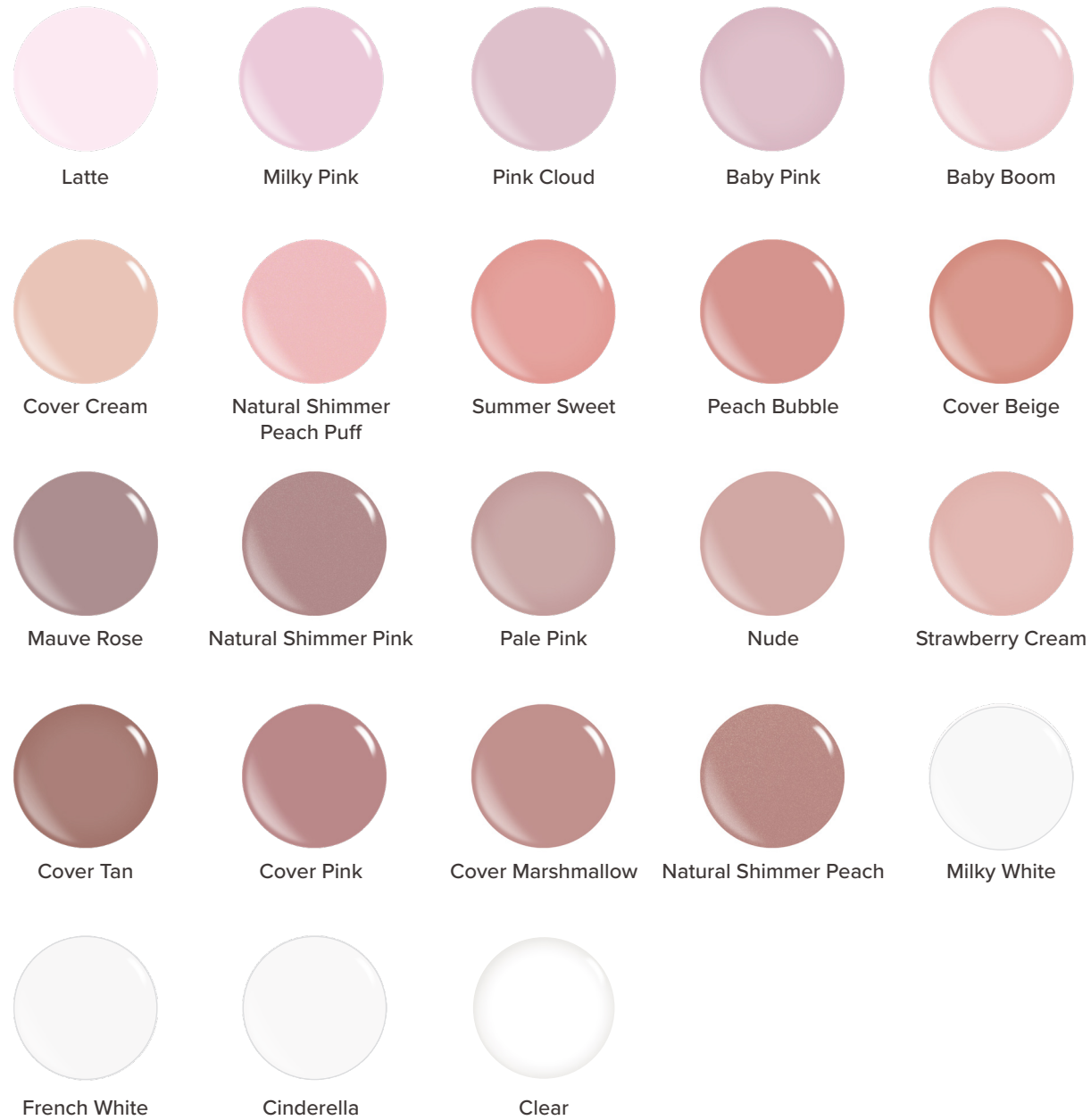


French White



GUMMY BASE GEL

This versatile formula is perfect for enhancing flatter nail shapes, creating a more flattering, sculpted look.



OVERLAY GELS

TECH CHART

	EASY OFF OVERLAY GEL	FIBER OVERLAY GEL	BUILD IT UP	GUMMY BASE
EXTENSIONS	LAMP DEPENDENT	SHORT	LONG	SHORT
SELF LEVELING		•	•	•
ADHESION		EXCELLENT	VERY GOOD	EXCELLENT
MULTIPLE COLORS AVAILABLE		•	•	•
CONTAINERIZATION				
HEMA FREE	•	•	•	•
TPO FREE	•	•	•	•
EU LABEL FOR PROFESSIONAL USE ONLY	•	•		•

COLOR GELS

SUPREME GEL

Supreme Gels are high shine color gels that cure to a non-tack finish. They are highly pigmented, offering phenomenal coverage making them ideal for various nail art applications. Can be used over traditional or soak off builder gels and acrylics (in combination with a base gel).

Color booklet at the back of the catalogue

GELPOLISH™

GEL POLISH

Introducing the industry's first vegan, TPO, HEMA and DI-HEMA free Gel Polish System.

This exciting leap forward in formulation presents added features and benefits applicable to both professional and retail nail markets.

Exceeding expectations in color coverage and soak off removal, this system can be elevated further by adding Rapid Release™ peel off base for non-soaking removal.

Color booklet at the back of the catalogue

COLOURIZE GP

Second generation gel polish specifically formulated as a cost-sensitive gel polish, giving you a competitive advantage without sacrificing quality. Its universal colors are extremely versatile and work with any base or top coat. Available in two formulations.

COLOURIZE GP IS HEMA AND TPO FREE!



TECH CHART

	SUPREME	GELPOLISH	COLOURIZE
UV AND UV/LED			
NO TACK/NO TOP COAT REQUIRED	•		
SOAKABLE		•	•
VISCOSITY	THICK (CAN BE USED FOR ART GEL)	THICK (PREFERRED IN EU)	THIN (PREFERRED IN US)
CONTAINERIZATION			
HEMA FREE		•	•
TPO FREE		•	•
EU LABEL FOR PROFESSIONAL USE ONLY	•		•

GELPOLISH™ BASES

GELPOLISH™ (R-GP) BASE GEL

While the adhesion properties were increased for longer wear in the GelPolish Base formula, it is our fastest soaking system. GelPolish Base is vegan.

PRO GELPOLISH™ BASE HEMA FREE

The Pro GelPolish Base formula strikes the perfect balance between durability and removal. Pro GelPolish Base is vegan.

PRO GELPOLISH™ BASE/TOP GEL

The Pro GelPolish Base/Top is a versatile 2-in-1 formula for base and top gel polish applications. Simplify your routine without compromising on quality.

PRO GELPOLISH™ BASE

This is our professional base gel. It is the first step in a three-phase gel system, designed to deliver longer-lasting wear with enhanced adhesion properties, but still fast to remove. Perfect for those seeking long wear with a quick, easy process.

GUMMY PRO BASE

Gummy Pro Base offers long-lasting wear due to the enhanced adhesion properties. Suitable as a gel polish base gel or as a natural nail overlay.

INNOVATIVE FORMULA

RAPID RELEASE™ PEEL OFF BASE

Patent-pending, peelable base coat for quick removal of traditional gel polish systems. It peels off in seconds!

AIR DRY, NO LIGHT CURING

US PATENT US11445794
EU PATENT EP3393589

INNOVATIVE FORMULA

RAPID RELEASE™ SOAK OFF BASE

Developed to enhance the removal process of our traditional gel polish, this base coat decreases soak off time to approximately 5-7 minutes, and is removed cleanly with no scraping or filing required. This gentle, no fuss removal maintains the esthetics of healthy-looking nails after gel removal.

AIR DRY, NO LIGHT CURING

US PATENT US11445794
EU PATENT EP3393589



TECH CHART

	GELPOLISH (RGP) BASE	PRO GELPOLISH BASE HF	PRO GELPOLISH BASE/TOP	PRO GELPOLISH BASE	GUMMY PRO BASE	RAPID RELEASE PEEL OFF BASE	RAPID RELEASE SOAK OFF BASE
WEAR EXPECTATION	10 DAYS	14 DAYS	14 DAYS	21 DAYS	21 DAYS	UP TO 10 DAYS	UP TO 14 DAYS
REMOVAL	FAST	MODERATE	MODERATE			PEEL OFF	FAST
FLAMMABLE						•	•
HEMA FREE	•	•			•	•	•
TPO FREE	•	•	•	•	•	•	•
EU LABEL FOR PROFESSIONAL USE ONLY		•	•	•	•		
APPLICATION NOTES	CURABLE	CURABLE	CURABLE	CURABLE	CURABLE	AIR DRY	AIR DRY

TOP GELS

O-3 TOP GEL

O-3 Top Gel is a high-shine and durable finishing gel.

AVAILABLE IN DIFFERENT VISCOSITIES CALLED THINNER GEL AND THICK TOP GEL

EO TOP GEL

EO Top Gel is a high-shine finishing gel that can be used over all gel and acrylic systems.

QF2

QF2 is a lacquer-thin top gel that cures with no tacky residue. This high-shine gel can be used over all acrylic and gel systems.

NOT INTENDED FOR LONG AND FLEXIBLE EXTENSIONS
CAN ONLY BE SOLD OUTSIDE THE EU

RAPID FINISH TOP GEL

Rapid Finish Top Gel is a flexible, medium viscosity clear finishing gel that cures with no tacky residue.

AVAILABLE IN SEVERAL ITERATIONS FOR DIFFERENT PERFORMANCE REQUIREMENTS

QF3 & QF3 PIGMENTED









QF3 is a flexible, tack-free top gel. It is ideal for use over long nail extensions and flexible systems such as gel polish. This LED-curable formula is thicker and cures less yellow than QF2.

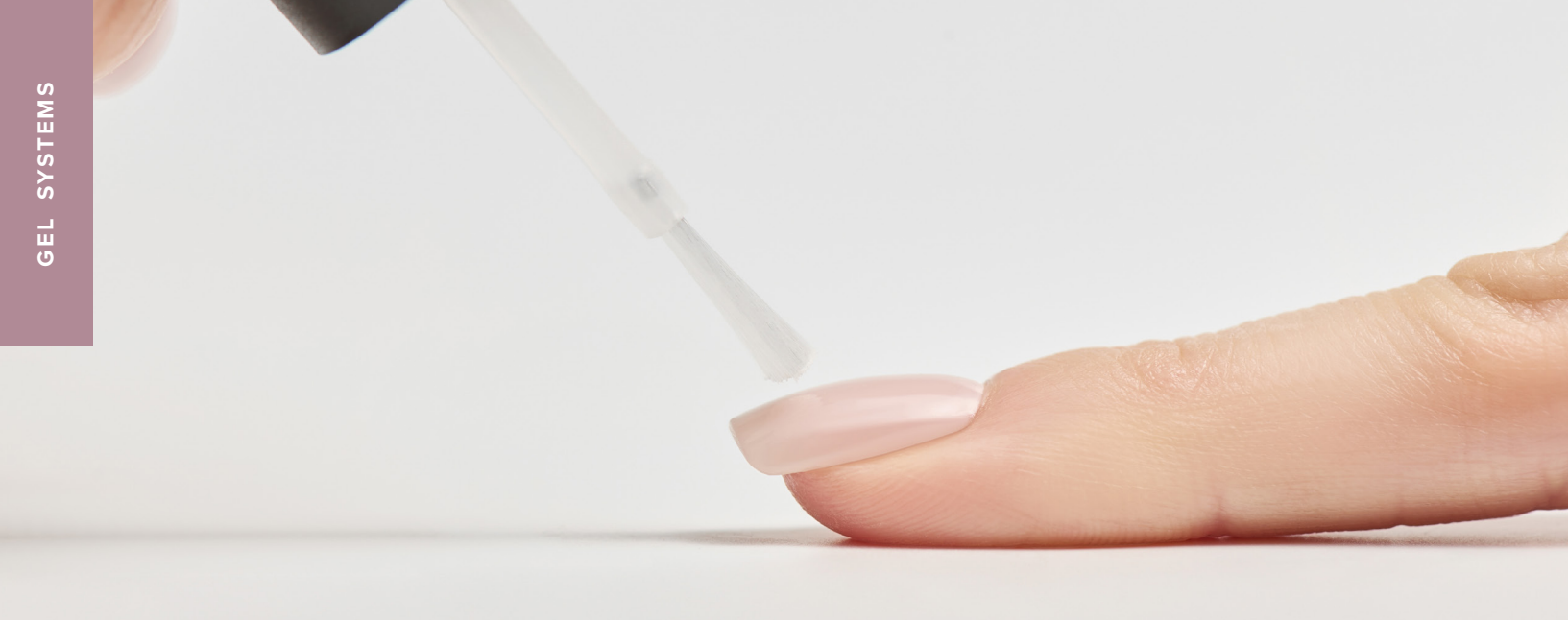
AVAILABLE IN SEVERAL BEAUTIFUL COLORS AND EFFECTS

MATTE FINISH NO TACK

Matte Finish No Tack Gel is a thin top gel that is designed to transform glossy nail color into a matte finish. This product can be used over Gel Polish, gels, and acrylics. It can be soaked off.

TECH CHART

	O-3 TOP GEL	QF2	QF3	EO TOP GEL	RAPID FINISH TOP GEL	MATTE FINISH NO TACK
 COMPATIBLE SYSTEMS	BUILDER GELS, ACRYLICS	BUILDER GELS, ACRYLICS	BUILDER GELS, GP, CZ, ACRYLICS	BUILDER GELS, GP, CZ, ACRYLICS	BUILDER GELS, GP, CZ, ACRYLICS	BUILDER GELS, GP, CZ, ACRYLICS
 NO TACK		•	•		•	•
 MULTIPLE COLORS AVAILABLE			•			
 SOAKABLE			FILE BEFORE SOAKING	•	•	•
 VISCOSITY	THICK (POT)	THIN	THICK	THIN	THIN	THIN
 UV ONLY	•	•				
 HEMA FREE	•	•				•
 TPO FREE	•			•		
 EU LABEL FOR PROFESSIONAL USE ONLY	•	•	•	•	•	•



GELPOLISH™ TOPS

GELPOLISH™ BASE/TOP GEL

The original standard GelPolish formulation was formulated as a 2-in-1 product. This cures to a high-shine finish as a top gel.

MAY BE USED WITH ALL
3 GEL POLISH SYSTEMS

GEL POLISH TOP GEL

Introducing the industry's first vegan, TPO, HEMA & DI-HEMA free Gel Polish top coat. This high-shine formula was designed as part of the R-GP system.








BRILLIANT TOP COAT

Brilliant Top Gel is our newest go-to top gel! Suitable over Gels and Acrylics, this top gel cures to a non-tack, hard, sleek finish and retains its high-shine appearance for 14+ days.

MATTE SOAK OFF

Apply Matte Soak Off over any GelPolish color to achieve matte and satin finishes.

TECH CHART

	GELPOLISH BASE/TOP GEL	BRILLIANT TOP GEL	GEL POLISH TOP GEL	MATTE TOP GEL
 COMPATIBLE SYSTEMS	BUILDER GELS, GP, CZ, ACRYLICS	BUILDER GELS, GP, CZ, ACRYLICS	BUILDER GELS, GP, CZ, ACRYLICS	BUILDER GELS, GP, CZ, ACRYLICS
 NO TACK		•		
 SOAKABLE	•	FILE BEFORE SOAKING	•	•
 VISCOSITY	THIN	THIN	THIN	THIN
 HEMA FREE		•	•	•
 TPO FREE	•	•	•	•
 EU LABEL FOR PROFESSIONAL USE ONLY	•	•		



ACRYLIC SYSTEMS

MONOMERS

J-2 MONOMER

J-2 Monomer is an advanced blended EMA monomer formulated for increased adhesion in acrylic applications. UV inhibitors are added for increased color stability and plasticizers are added for durability.

AVAILABLE IN **CLEAR (C0)**, **VIOLET (C2)**, **BLUE (C1)**, AND **PURPLE (C7)**

THIS PRODUCT IS IDEAL FOR ADVANCED TECHNICIANS

G-3 MONOMER

G-3 Monomer is a standard blended EMA monomer that is perfect for retail applications or for use on clients with sensitive skin. It contains UV inhibitors and plasticizers for added durability and flexibility.

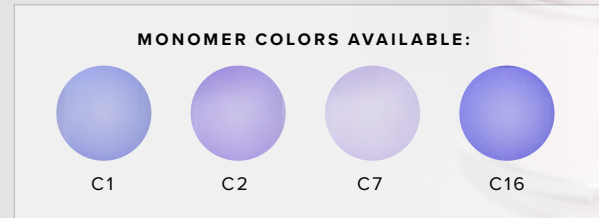
AVAILABLE IN **CLEAR (C0)**, **VIOLET (C2)**, **BLUE (C1)**, AND **PURPLE (C7)**

THIS PRODUCT IS IDEAL FOR STUDENTS AND NOVICE TECHNICIANS

ODORLESS MONOMER

COMING SOON

Odorless Monomer has lower odor compared to traditional acrylic monomers and enables strong and durable finished nails. The residual tacky layer after cure minimizes the amount of dust while filing.



FUSION MONOMER

COMING SOON

Fusion Monomer is a low odor UV/LED curable monomer that can be applied like a traditional acrylic system.

AVAILABLE IN **CLEAR (C0)** & **BLUE (C1)**

R-1 MONOMER

R-1 Monomer is a blended EMA monomer system formulated to give moderate adhesion.

AVAILABLE IN **BLUE (C1)**

THIS PRODUCT IS IDEAL FOR ADVANCED TECHNICIANS AND IS SUITABLE FOR WARMER CLIMATES

J-2000 MONOMER

When used with P1 this is a fast set monomer with excellent adhesion.

SHOULD NOT BE RESOLD IN THE US

PL MONOMER

PL Monomer is a blended EMA monomer system formulated for clients who have acrylic lifting problems. Artificial nails applied with PL Monomer are long lasting and have a superior bond to the nail plate.

AVAILABLE IN **BLUE (C1)** AND **DARK BLUE (C16)**

FRAGRANCE DROPS

By using a few drops of fragrance, you can decrease the odor of traditional monomer with pleasurable scents!

AVAILABLE IN **APPLE, CHERRY ALMOND, PEACH, AND COFFEE**. MTO OR CUSTOMIZATION MAY BE AVAILABLE

FRAGRANCE MONOMER

Traditional monomers with enjoyable, aromatic experience!

AVAILABLE IN **COFFEE, MANGO, LILAC, LAVENDER, FRESH & CLEAN, AND PUMPKIN SPICE**. MTO OR CUSTOMIZATION MAY BE AVAILABLE



TECH CHART

	J-2	G-3	R1	R2	PL	J-2000
 POLYMER PAIRING	POLYPURE, P3, P4, P6	POLYPURE, P3, P4, P6	POLYPURE, P3, P4, P6	POLYPURE, P3, P4, P6	POLYPURE, P3, P4, P6	P1
 ADHESION	VERY GOOD	MODERATE	GOOD	GOOD	GOOD	EXCELLENT
EMA OR MMA BASED	EMA	EMA	EMA	EMA	EMA	MMA
 DMPT FREE VERSIONS AVAILABLE	YES	YES	YES	NO	YES	YES
USE RECOMMENDATIONS	NOT RECOMMENDED FOR WARM CLIMATES	GOOD MONOMER FOR BEGINNERS, IDEAL FOR WARM CLIMATES	IDEAL FOR WARM CLIMATES	IDEAL FOR WARM CLIMATES	IDEAL FOR WARM CLIMATES	
BULK/DRUM STABILITY*	LEAST	BEST	MODERATE	MODERATE	MODERATE	BEST

*Refers to storage handling and proper filling headspace, some formulas are more sensitive than others

POLYMERS

P1 POLYMER

P1 is a slow-set copolymer with excellent adhesion, clarity, hardness and strength.

THIS POLYMER SYSTEM SELF-LEVELS AND IS IDEAL FOR NOVICE TECHNICIANS, STUDENTS OR TECHNICIANS WHO PREFER A LONGER WORK TIME

P6 POLYMER

P6 is a slow/medium-set copolymer with good adhesion, excellent clarity and strength.

THIS POLYMER SYSTEM CAN BE USED AS AN ALTERNATIVE WINTER SYSTEM FOR P1 USERS DESIRING FASTER SET-UP IN COLD CLIMATES

DIP POLYMER

Dip Polymer is a fine acrylic powder to be used with glue or gel-type dip technique.

P3 POLYMER

P3 is a fast-set homopolymer with good adhesion, excellent clarity and ideal flexibility.

THIS POLYMER SYSTEM OFFERS EXCELLENT CONTROL FOR EXPERIENCED TECHNICIANS. P3 POLYMERS ARE IDEAL FOR COMPETITION SPEED APPLICATIONS

POLYPURE POLYMER

Polypure is a fast-set homopolymer with good adhesion, excellent clarity and ideal flexibility.

THIS POLYMER SYSTEM OFFERS SUPERIOR CONTROL FOR EXPERT TECHNICIANS. PP POLYMERS ARE EXCELLENT FOR COMPETITION SPEED APPLICATIONS

COVER POLYMER

This collection of unique, colored polymers gives the possibility of creating natural and extreme extensions of the natural nail bed. These powders can be used to hide nail imperfections, extend the natural nail bed or make perfect artificial nails.

P4 POLYMER

P4 is a medium-set copolymer with good adhesion, excellent clarity and strength.

THIS POLYMER SYSTEM IS IDEAL FOR EXPERIENCED TECHNICIANS AND TECHNICIANS WORKING IN WARMER CLIMATES

ODORLESS POLYMER

COMING SOON

Our reformulated odorless system offers less yellowing than traditional systems when used with our Odorless monomer or Fusion light curable monomer. Both options have a slight tacky layer minimizing the amount of dust while finishing the nail.


COLORED POLYMER

These highly pigmented powders are strong, durable and provide long-lasting color for various color application needs.

AVAILABLE IN **SEVERAL COLORS** CAN BE USED WITH GLUE OR GEL-TYPE DIP TECHNIQUE



TECH CHART

	P1	P3	P4	P6	POLYPURE
 EMA:MMA RATIO	70:30	95:5	85:15	80:20	100% EMA
 MONOMER PAIRING	J2000	G3, R1, R2, PL, J2	G3, R1, R2, PL, J2	G3, R1, R2, PL, J2	G3, R1, R2, PL, J2
 SETTING TIME WITH EMA	SLOW	FAST	MEDIUM	MEDIUM	FAST
 SETTING TIME WITH MMA	FAST				
 ADHESION	EXCELLENT	GOOD	VERY GOOD	VERY GOOD	GOOD
 STRENGTH/HARDNESS	VERY HARD	HARD	HARD	HARD	HARD



COATINGS

BASE COATS

AGELESS NAIL FOUNDATION BASE COAT

A light natural colored base layer to perfectly cover imperfections and smooth out ridges on the nail plate.

GEL RESCUE

This soothing treatment includes bamboo extract, which supports nail health, reduce ridges and improve luster to natural nails that have experienced damage. It can also be used as a base coat.



TOP COATS

SPEED SHINE TOP COAT

Speed Shine Top Coat is a fast drying top coat sealer.

GLOSS & GO TOP COAT

This exclusive quick-dry formula hardens and dries any nail color in seconds. It provides protection to the nail color layers to seal and strengthen your manicure. Easy, self-leveling application smooths the nail surface, creating an impeccably glossy finish!

MANI-FIQUE TOP COAT

This high-shine luxe top coat provides salon quality at home.

MEGA GLOSS TOP COAT

This top coat finishes to a high shine and prevents polish from chipping or peeling.

KEYSHIELD

Keyshield is a moderate viscosity top coat that delivers a high-shine finish. This fast-drying top coat creates a very durable coating. Can be cured in UV for a stronger finish.

DIAMOND COAT

Diamond Coat is a fast-drying, non-yellowing top coat. The top coat finishes to a high-shine and can be used over polish or artificial nails.

ALL ITEMS ARE 5-FREE (NO FORMALDEHYDE, FORMALDEHYDE RESIN (TFR), TOLUENE, CAMPHOR OR DBP) UNLESS OTHERWISE NOTED.
ALL TOP AND BASE COATS ARE CUSTOMIZABLE TO MEET PERFORMANCE AND MARKETING NEEDS.



ACCESSORIES

NAIL ART

FOIL TRANSFER AIR DRY BASE COAT

Air Dry Foil Transfer Base Coat is specifically formulated to transfer nail art designs from the foil directly to your nails without cyanoacrylate or LED/UV Gel. Ideal for creating your own nail art design.

US PATENT US11445794
EU PATENT EP3393589

BLOOMING GEL

Use this unique gel to create beautiful spreading effects! Ideal to create watercolor art.

OMBRE DIP GEL

Transform any dip or acrylic manicure into an ombre effect in seconds! Can use multiple color powders and dip as desired for a multi-colored rainbow ombre look!



ART & PAINT GELS

Various formulations available. Contact your sales rep for the latest iterations to meet your performance needs!





PREPS & PRIMERS

B-2 NAIL PREP

B-2 Nail Prep is used to gently dehydrate the natural nails to remove any natural oils prior to artificial nail applications. Use before primers for better adhesion of gels, acrylics and glued on tips.

FLEXBOND HF

HF Ultrabond Primer is a low-odor, methacrylic acid-free primers used to promote adhesion to the natural nails. Same performance and expectations as the original Ultrabond now available in a HEMA free version.

WORKS PERFECTLY WITH ALL GEL AND ACRYLIC SYSTEMS

ALL VERSIONS OF ULTRABOND ARE LOW IN ODOR AND DO NOT BURN THE NATURAL NAILS OR CUTICLES.

ULTRABOND

Our Ultrabond Primers are low-odor, methacrylic acid-free primers used to promote adhesion to the natural nails. It is much safer for natural nails than acid primers without sacrificing performance.

WORKS PERFECTLY WITH ALL GEL AND ACRYLIC SYSTEMS

ALL VERSIONS OF ULTRABOND ARE LOW IN ODOR AND DO NOT BURN THE NATURAL NAILS OR CUTICLES.

ULTRABOND THIN STRONG WITH VITAMINS

A slightly thicker version of Ultrabond original with increased adhesion and the added benefits of vitamins B5 and E.

WORKS PERFECTLY WITH ALL GEL AND ACRYLIC SYSTEMS

ALL VERSIONS OF ULTRABOND ARE LOW IN ODOR AND DO NOT BURN THE NATURAL NAILS OR CUTICLES.

ULTRABOND TRIPLE STRONG WITH VITAMINS

A slightly thicker version of the Ultrabond Thin Strong with triple the strength adhesion, and the added benefits of vitamins B5 and E.

WORKS PERFECTLY WITH ALL GEL AND ACRYLIC SYSTEMS

ALL VERSIONS OF ULTRABOND ARE LOW IN ODOR AND DO NOT BURN THE NATURAL NAILS OR CUTICLES.

ACCELERATORS/ ACTIVATORS

ACCELERATORS/ACTIVATORS

Accelerators and activators are used to increase the cure speed of all glue, resin, monomer and fiberglass systems.

ACTIVATOR FOR DIPPING

Activator to be used with a dipping system.

REMOVERS

NON-ACETONE POLISH REMOVER

Non-Acetone Polish Remover quickly removes polish without over-drying the nails. This product has a soft lavender scent.

VEGAN ACETONE REMOVER

This acetone remover gently removes professional and retail nail coatings without damaging the natural nail. We retained the conditioning benefits found in our original version with lanolin oil by utilizing non-animal derived raw materials.

AVAILABLE IN **CLEAR** AND **BLUE**



WIPING SOLUTIONS

HIGH-SHINE WIPING SOLUTION

Used to remove tacky surface residues from all cured gel systems with shine-booster technology.

MISCELLANEOUS

KEY-DRY POLISH DRYER

Key-Dry Polish Dryer can be used in a spray bottle or dropper to accelerate the dry time of air-dry lacquers.

B-4 BRUSH CLEANER

B-4 Brush Cleaner is designed to remove excess acrylic and gel residue from nail brushes without damaging the brush bristle.

TOP COAT THINNER

Top Coat Thinner can be used to dilute nail polishes, top coats or base coats that have thickened with age.

NO LINES

No Lines is applied during acrylic refills to eliminate any visible file lines. This material blends old and new acrylic to make it appear brand new.

CAN BE USED AS A TIP BLENDER

B-1 CLEANSING SOLUTION

B-1 Cleansing Solution is used to disinfect hands and working materials.

CLEAN START

Clean start is an all-in-one liquid to clean the surface of the natural nails before any application, to remove the tacky layer aftercuring gels or gentle wipe off any product residue from your brush.

EASE SOLUTION

A non-yellowing and odorless solution formula that allows for a frictionless application and shaping of high viscosity gels. Ease solution allows the product to stay exactly where you want it on the nails while keeping the product from sticking to the brush.

BOOSTER LIQUID

Booster Liquid is used to customize the performance of your monomer; it enhances adhesion and strength, accelerates the setting time, and prevents crystallization in cold climates. It can also be used as a Gel thinner.



CUTICLE OILS

CUTICLE OIL

Cuticle Oil is a conditioning treatment used to moisturize dry, damaged cuticles and to promote strong, flexible nails.

AVAILABLE IN SEVERAL STOCK COLORS AND FRAGRANCES



COMPLETE CARE 2.0

This is a luxurious natural oil enriched with meticulously crafted organic oils. This formula contains Olive Oil, Avocado Oil and Jojoba Oil for their unique natural benefits.

This non-greasy treatment absorbs quickly into the skin, nails and cuticles, leaving the skin feeling soft and conditioned.

THICK CUTICLE OIL WITH ROSE SCENT

This thick cuticle oil conditions and moisturizes dry and damaged cuticles, promotes healthy growing nails. This thicker material can be packaged in a pen or tube for unique application.



NEW

BODY & CUTICLE OIL

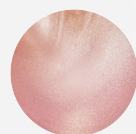
Transform your skin and nails with our luxurious Glitter Body & Cuticle Oil – the ultimate multi-purpose beauty essential. Infused with shimmering, ultra-fine glitter particles, the Glitter Body & Cuticle Oil leaves your skin feeling nourished and radiant.

Perfect for your body, it can also double as a cuticle oil, delivering intense moisture to your nails and cuticles with a touch of sparkle.



BLUSH & GLOW

The Rosy Luxe and Blush & Glow formulas contain Myrtilol and Cetiol that are known for properties such as hydration, softening and the creation of a silky application sensation.



ROSY LUXE



BRONZED BLISS

This copper/bronze colored oil with a golden and bronze glitter contains sunflower oil, a highly praised ingredient known for its hydration, protection, anti-aging and healing properties.



NEW

SOFTENING & CARE MISTS

Transcending the manicure experience. We have made a selection of the most sensual, exotic and refreshing fragrances and have elevated the manicure experience to a new level of luxury by adding a handpicked active ingredient to each.

Each one of our Softening & Care Mists have their own unique fragrance and function as well as creating a magical softening and soothing effect on the skin. All Mists contain Isopropyl Myristate which is an emollient and known to help strengthen the skin barrier, locking moisture in.

Softening & Care Mist infuses your skin with an irresistible fragrance that will leave you feeling utterly pampered without the oily residue of a hand lotion.



SWEET GRAPEFRUIT



MANOI FLOWER



TROPICAL ALMOND

COLOR OVERVIEW

SUPREME GELS 80

GEL POLISH 90

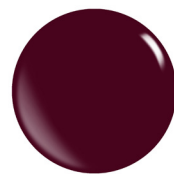
COLORED POWDERS 134





SUPREME GELS

PATENTED EP2547730 & US8367045



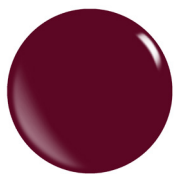
SC-164



SC-130



SC-32



SC-122



SC-82



SC-71 NC



SC-59



SC-70 NC



SC-152 NC



SC-153 NC



SC-134



SC-20



SC-48



SC-12



SC-66



SC-151 NC



SC-83 NC



SC-52



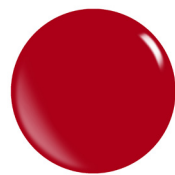
SC-18



SC-15



SC-98



SC-97 NC



SC-165



SC-49



SC-22



SC-80



SC-95



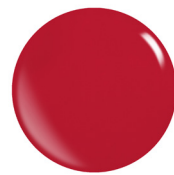
SC-172



SC-175



SC-183



SC-113



SC-19



SC-03



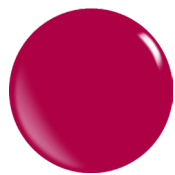
SC-129



SC-50



SC-05



SC-125 NC



SC-11



SC-185 NC



SC-108 NC



SC-14



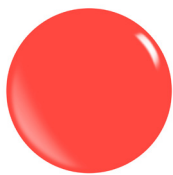
SC-77 NC



SC-62



SC-71 NC



SC-146 NC



SC-55



SC-13



SC-17



SC-157 NC



SC-119



SC-127 NC



SC-179 NC



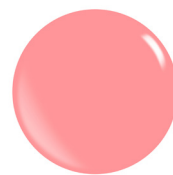
SC-92 NC



SC-68



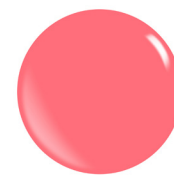
SC-107 NC



SC-143 NC



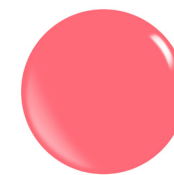
SC-182



SC-145 NC



SC-178 NC



SC-144 NC



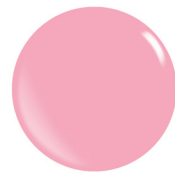
SC-150 NC



SC-41



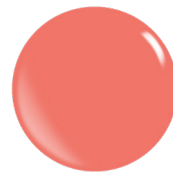
SC-04



SC-117



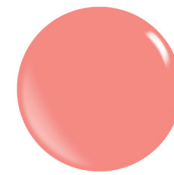
SC-116



SC-96



SC-25



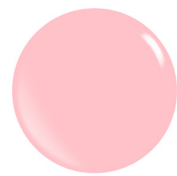
SC-85 NC



SC-65



SC-51



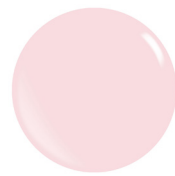
SC-142



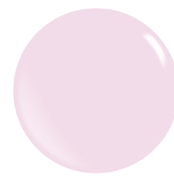
SC-110



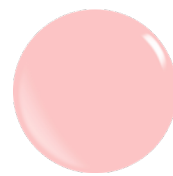
SC-33



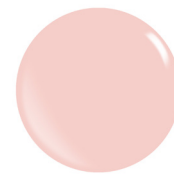
SC-158



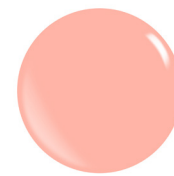
SC-140



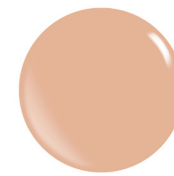
SC-115



SC-114



SC-147 NC



SC-159



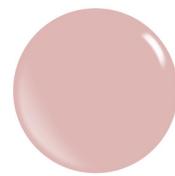
SC-34



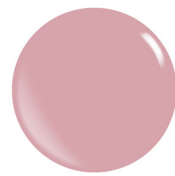
SC-58



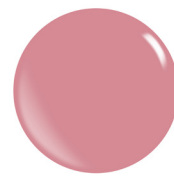
SC-111



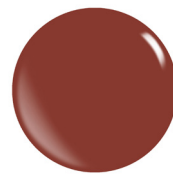
SC-148



SC-161



SC-141



SC-160



SC-64



SC-31



SC-10



SC-73 NC



SC-170



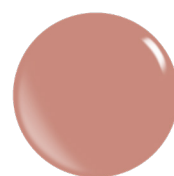
SC-56



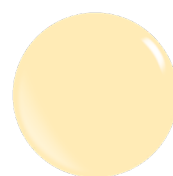
SC-112



SC-79



SC-88



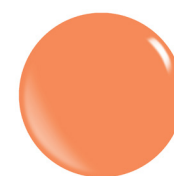
SC-86



SC-186



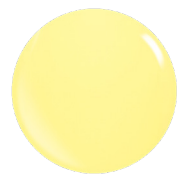
SC-128 NC



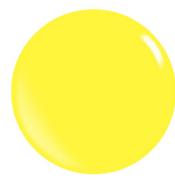
SC-93



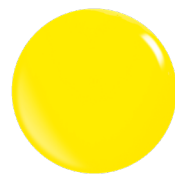
SC-40



SC-54



SC-156 NC



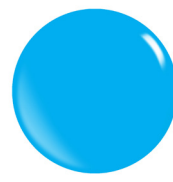
SC-07



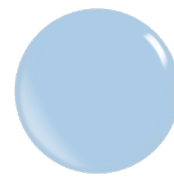
SC-74 NC



SC-39



SC-75 NC



SC-84



SC-180



SC-23



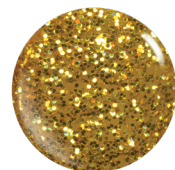
SC-44



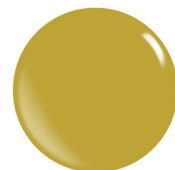
SC-38



SC-166



SC-26



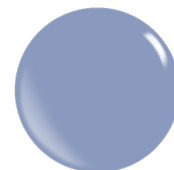
SC-176



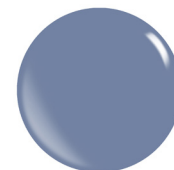
SC-118



SC-57



SC-104



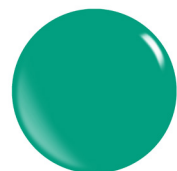
SC-89



SC-78



SC-100



SC-91



SC-29



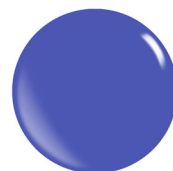
SC-72 NC



SC-155 NC



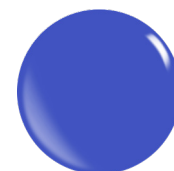
SC-43



SC-167



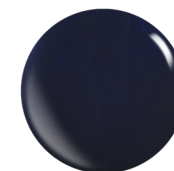
SC-137



SC-109 NC



SC-08



SC-24



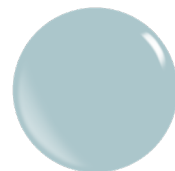
SC-61



SC-154 NC



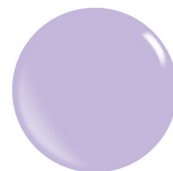
SC-184



SC-99



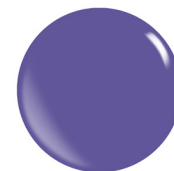
SC-53



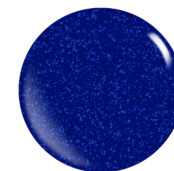
SC-120



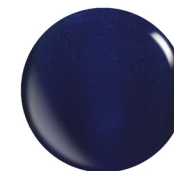
SC-42



SC-168 NC



SC-138



SC-136



SC-123



SC-60



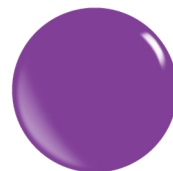
SC-133



SC-121 NC



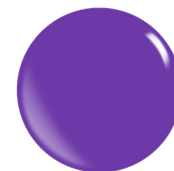
SC-30



SC-87



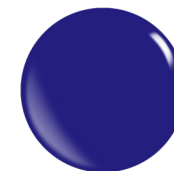
SC-45



SC-103 NC



SC-28



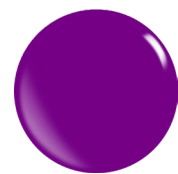
SC-139



SC-90 NC



SC-135



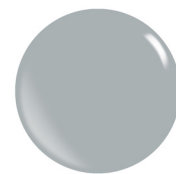
SC-105 NC



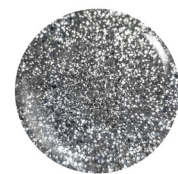
SC-76 NC



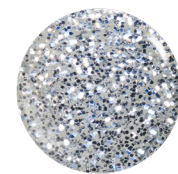
SC-16



SC-173



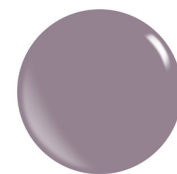
SC-106 NC



SC-27



SC-47



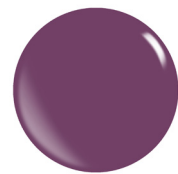
SC-149



SC-63



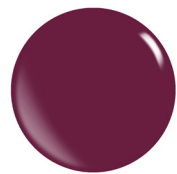
SC-21



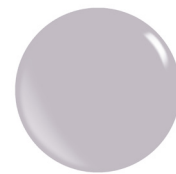
SC-171



SC-06



SC-163 NC



SC-169



SC-131



SC-35



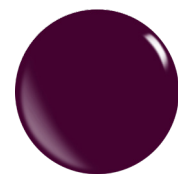
SC-124



SC-94



SC-09



SC-126 NC



SC-67



SC-37



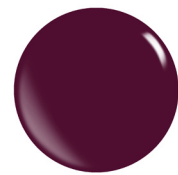
SC-81



SC-01



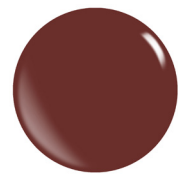
SC-102



SC-101



SC-36



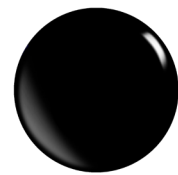
SC-177



SC-162



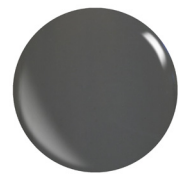
SC-46



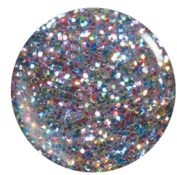
SC-02



SC-174



SC-132



SC-69

GEL POLISH

PATENTED EP2547730 & US8367045





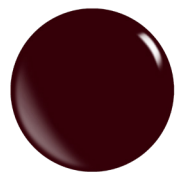
Emperor



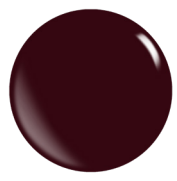
Congo



Urban Legend



Que Syrah, Syrah



Elderberry Jam



A Dozen Roses



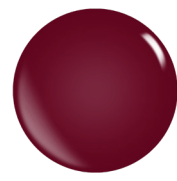
No Place Like Home



Apple of My Eye



Dewberry



Ruby Glass



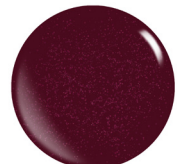
Bed of Roses



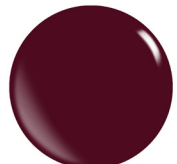
Hopeless Romantic



Ride or Die



Wine & Dine



Port Maroon



Aphrodite



Beyond the Velvet Rope



Pink Pony Club



Berry Cherry



True Love's Kiss



You Had Me at Merlot



Cat Eye Plum



Rock'em Red



Cab Sauv



Dear Santa



Bohemian Raspberry



Monarch



Yours Truly



Ruby Shimmer



Antique Rose



Sparkling Fig



B Positive



Burgundy



Sangria



Plum Perfect



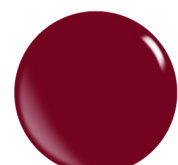
El Salva



Haute Mess



Red Dahlia



Refurbished Red



Dewberry



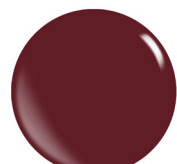
Lady Noir



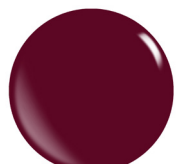
This is My Jam!



Winterberry



Cherry Bomb



Biking Red



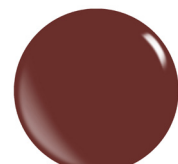
Fantastic



Berry Well



Crimson



Brandt New



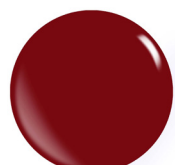
Meritage

NC NON-COMPLIANT

NC NON-COMPLIANT



Passionate Red



Power Move



Cherrywood



Bordeaux



Reddy for Anything



Fun



Fire Red Glitter



Fire Brick



You Red My Mind



Firecracker



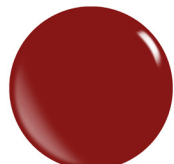
Cherry Pie



War of the Roses



Poinsettia Please



Rosewood Red



Stiletto



Thunderbird



Rust



Red Ginger



High Risk Red **NC**



Sparkling Red



LF Red



Falling Star



Starlet



Twin Flame



Wine Red



Beta-Carotene



Tropical Punch



Coquelicot



De-Ly-Lah



Metallic Scarlet Red



Claret



Carmine



Red Flag!



You're So O Negative



Big Poppy



Fiery Red



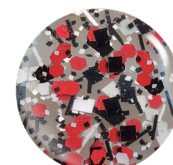
She's a Wildflower



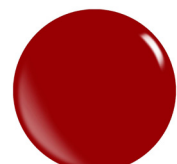
Sun Devil



Samba



Splatter Red



Heartthrob



Red Hots



Huckleberry **NC**



Crimson Corset



Heat Wave



Tuscany



Amaryllis



Milano Red



Monza



*Vivid Candy

NC NON-COMPLIANT

NC NON-COMPLIANT | * KNOWN TO FADE



Lobster Roll **NC**



Ferrari Red **NC**



Mandy



Romance Red



Jazberry Jam



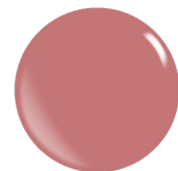
Moulin Rouge



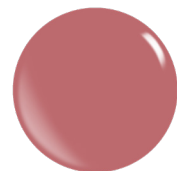
Cuddle Bug



Party Punch



Mauve Wood



Desert Rose



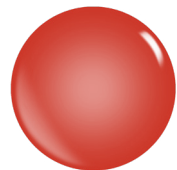
Gojiberry **NC**



Radical Red



Lyla



Fire Glass



Shimmer Red



Soulmate



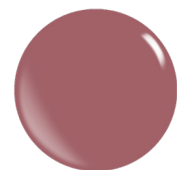
Sindon



Mauve Pink Shimmer



Red Damast



Broadway Rose



Pearly Red



I'm Hooked



*Flamenco



Open Invitation



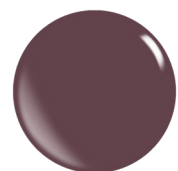
Bombshell



Forbidden Rose



*Puce



Making Mauves



Sin & Tonic



Toyota Green



Cabana



Poppy Pink



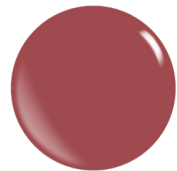
Heartless



Gerber Daisy



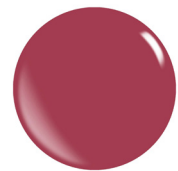
Strawberry Fields Forever



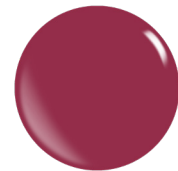
Chili Oil



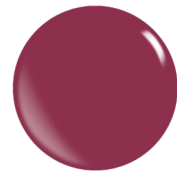
Freesia Spirit



BubbleYUM



Scooter



Rose Fever



What in Carnation



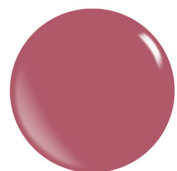
Flamingo Pink



Gau Again



Happy Glow



Frida K



Cloudberry



Suspicious



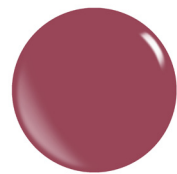
Scarlet Letter



Read My Tulips



Pink Alert



Romantic Dark Rose



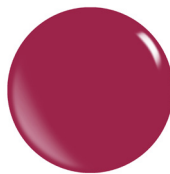
Lovesick



Glamour Pink



Instant Crush



Pomegranate



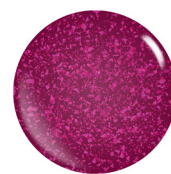
Viva Magenta **NC**



Dream Pink



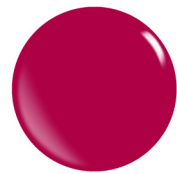
Party Girl



Surprise!



Fuchsia Shimmer **NC**



Love Potion **NC**



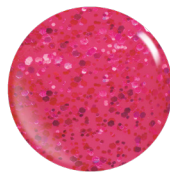
Pageant Queen **NC**



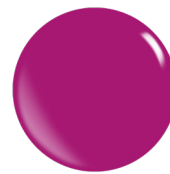
C'mon Barbie **NC**



Queen B **NC**



Hot Pink Glitter



Flower Power



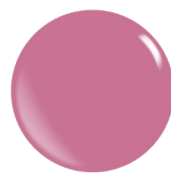
Boysenberry **NC**



Bouquet



Honda Red



Pink Panther



Popsicle



Sweet 16 Pink



Neon Passion **NC**



Fay **NC**



Radioactive



Caberet **NC**



Jolt



*Homecoming



Viva Voila



You're Invited



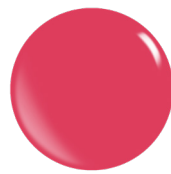
Pink Cosmo



Pink Pizzazz



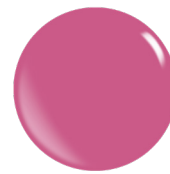
Be Bad **NC**



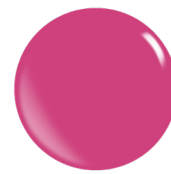
Vivid Amaranth



Fiery Flamingo **NC**



I Want Candy



Raspberry Sorbet



Cupido



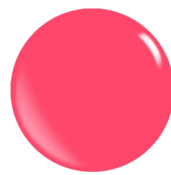
Arm Candy **NC**



Lingonberry **NC**



Pink Wow **NC**



Dreamhouse **NC**



Fay with Glitter **NC**



Cerise Glass



Pink Punch **NC**



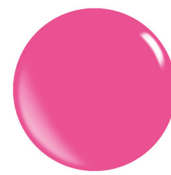
Mexican Pink **NC**



Bohemian Pink



Ooh la la!



Hula Hibiscus **NC**



Barbie Pink

NC NON-COMPLIANT | **SH** SHEER

NC NON-COMPLIANT | * KNOWN TO FADE



Electric Magenta **NC**



True Love



*Charmed



Jolt



*Bubble Gum



*Vivid Pink Ribbon



Double Bubble



Sachet Pink **NC**



*Vivid Shocking Pink



Pop of Pink



Flirt **NC**



Pink Chiffon



Sweet As Candy



Prism Pink



Tickle Me Pink



Pink Frosting **NC**



Hi Barbie



Fairy Wings



Pink Vibes Only **NC**



*Flower



Sweet Tooth



Honey Bunny



Cosmopolitan



Fuchsia Pink



Purple/Pink Thermo **NC**

NC NON-COMPLIANT | * KNOWN TO FADE





Candy Pink



Laffy Taffi



B.Y.O.Blush



Fairy Tale



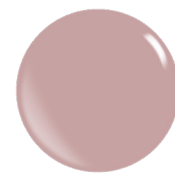
GITD Neon Pink
Purple **NC**



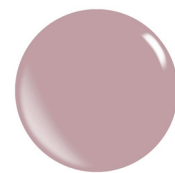
Made You Blush



Milk & Honey



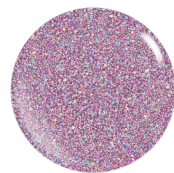
Miso Happy



Cookie Cutter



Birthday Cake



Pizzazz



Galentine



Pinky Promise



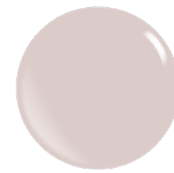
Cherry Blossom



XOXO



Cotton Candy



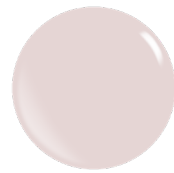
State of Nature



Labyrinth **SH**



Michael Angel Oh



Act Natural



Twinkled Pink



En Pointe



Ladylike



Innocence



Pink Lady **SH**



Metallic Iridescent Red



SheerShell **SH**



Rose Water **SH**



Babydoll Pink **NC**



Precious Metals



She's a Star



As You Wish



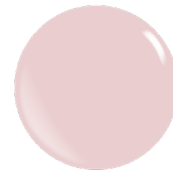
Wilbur **SH**



Sparkling Rose



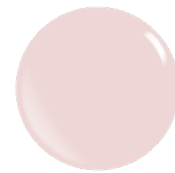
Sweet Lily



Adore Me



Papillon



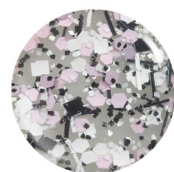
Plucked Petals



Pop the Prosecco



Metallic Pink



Splatter Pink



Iridescent Glam
Effect Heavy



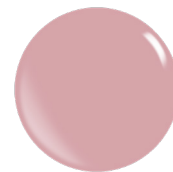
Iridescent Glam
Effect Light



Pale Moon



Tutu Pink **SH**



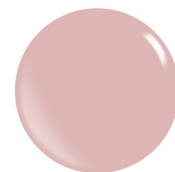
Perfect Mani



Marshmallow



One Trick Peony



Bridal Rose



Mademoiselle

NC NON-COMPLIANT | **SH** SHEER

NC NON-COMPLIANT | **SH** SHEER



Mauve Glow



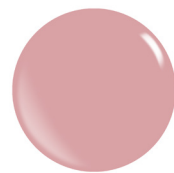
Pinky Swear



Petal



Amour



Starfish



Rose Copper Glitter



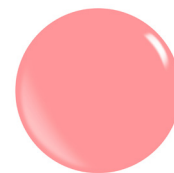
*Can Can



Metallic Bright Red



Flower Child



Apricot Echo **NC**



Rose Quartz **NC**



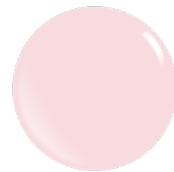
Rosy Pink



Piggy Pink



Strawberry Milk



Lisboa



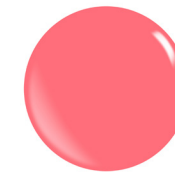
Watermelon Sugar



Seashell Hot Pink



Brilliant Pastel Magenta **NC**



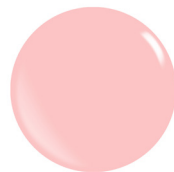
Happy **NC**



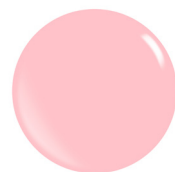
Pink Cadillac



Lychee Rose



Peachskin



Peach Bud **NC**



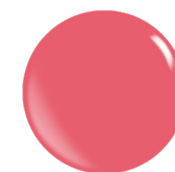
GITD Neon Pink **NC**



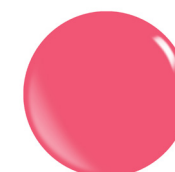
Heather



Candy Pop **NC**



Pink or Swim



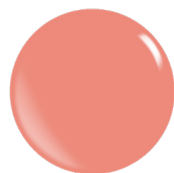
Watermelon Pink **NC**



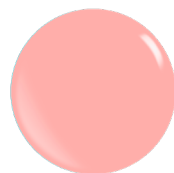
Ibiza



*Muse



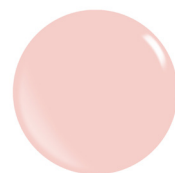
Fizzy Peach



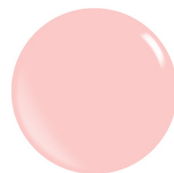
Pink/Orange



Dainty



Sepia Rose



Perfect Match



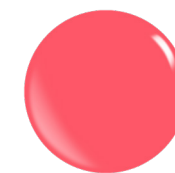
Christy with Glitter **NC**



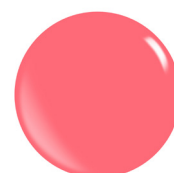
Christy **NC**



Carnation



Cali Girl



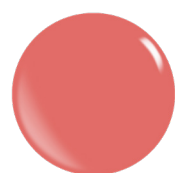
Candy Pop



Brilliant Pastel Cerise **NC**



Love Lockdown



Sunkissed Coral



Sunset Pink



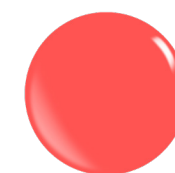
Sundown



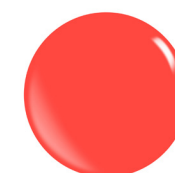
Pretty Please **NC**



Flair



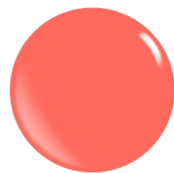
Coral Atoll



Young Girls **NC**



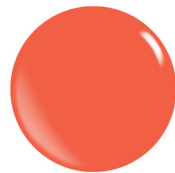
*Mango



Tropicana



*Peach Sorbet



Orange Mood



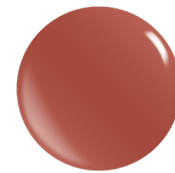
*Vivid Tango **NC**



Emma with Glitter **NC**



Jack O'Lantern



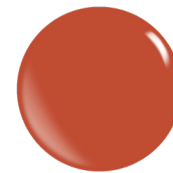
Sienna Silk



Chili



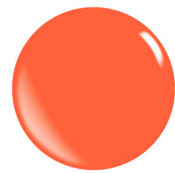
Maroon Gold Shimmer



Pumpkin



Burnt Sienna



Road Work Ahead **NC**



Summer Citrus



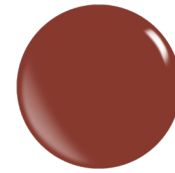
Emma **NC**



Tangerine Dreams



Kawasaki Gold



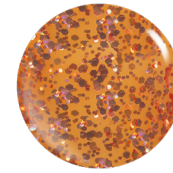
Burnt Henna



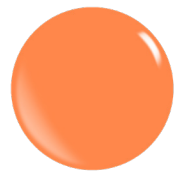
Sun Dazed



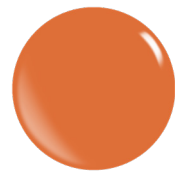
Vintage



Penny Copper Glitter



Atomic Tangerine



World Peach



Cantaloupe



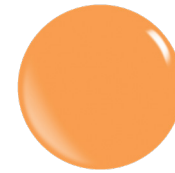
Peach Out **NC**



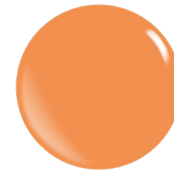
Hermes



Fields of Gold



Vivid Sorbet **NC**



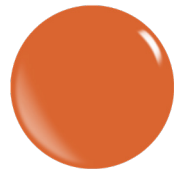
Tangelo **NC**



Chloe w/ Glitter **NC**



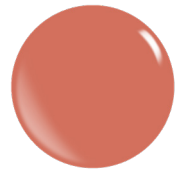
Chloe **NC**



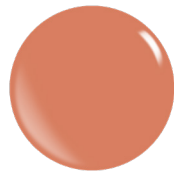
Orange You Glad



Flame



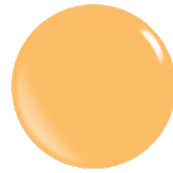
Pacific Salmon



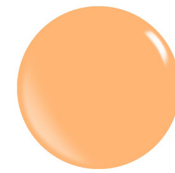
Mecca Orange



Clementine



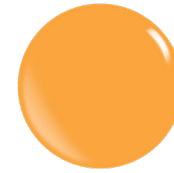
Brilliant Pastel Orange **NC**



Sunrise **NC**



Oh Bee-have **NC**



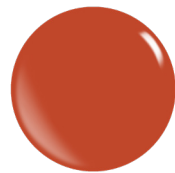
Pomelo Crush



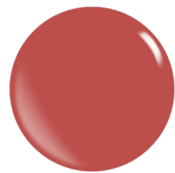
Dawn of Eos



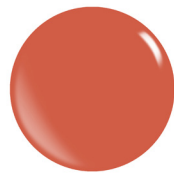
Suzuki Orange



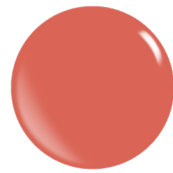
Playing Koi



Pompeian Red



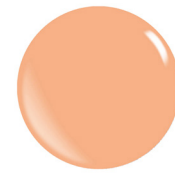
Coral Dream



Coral Reef



Skin



Daybreak



Toasted Coconut



Bronze Glow



*Creamsicle



You Glow Girl



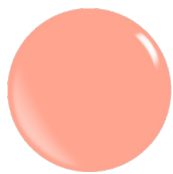
Peaches



Peru



Petal to the Metal **NC**



Peach On The Beach



Creme Brulee



Hazelnut



Pandora **SH**



Bare



Made in Nature



Sparkling Peach Sunrise



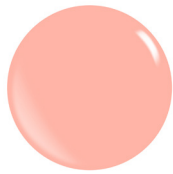
Nude



I'm Blushing



Heavy Glitter
Rose Gold



Apricot Blush **NC**



Aba



Barely There



Nearly Naked



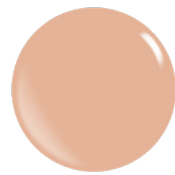
Grapefruit



Superneutral



Sandy Beach



Cafe Creme



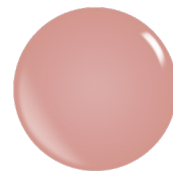
Exposed



Au Naturel **SH**



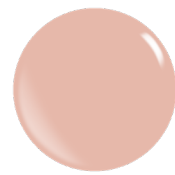
Sweetie Pie



Smitten



Angora



Blush Hour



Incognito



Secret Admirer



Sunkissed



Copper Canyon



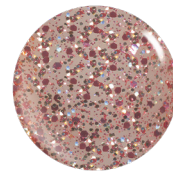
Latte



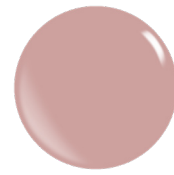
Full House



Shoreline



Rose & Gold Glitter



Cupid's Bow



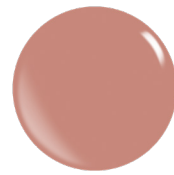
Blush Gold Flake



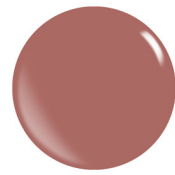
Blush Heavy Gold



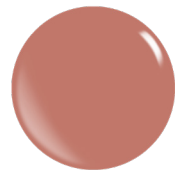
Avalon



Crepe



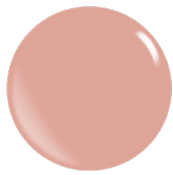
Rose Taupe



Pillow Talk



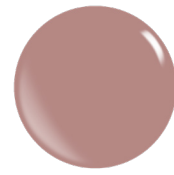
Seashell Pink



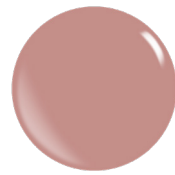
For Peach Sake



Quicksand



Love Affair



Cool Pink



Carisma



Hemp

NC NON-COMPLIANT | **SH** SHEER

NC NON-COMPLIANT | **SH** SHEER



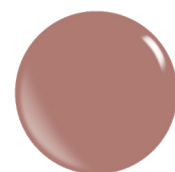
Rosetta



Rose Gold



Spiced Cider



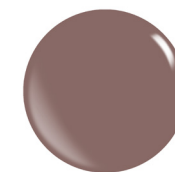
Mauve Mountains



Heavy Glitter Rose



Hazelnut Creme



Falcon



Glam Squad



*Sage



Big Teddy Bear



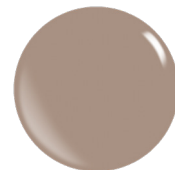
Latte



Velvet Teddy



Mr. Grey



Wheat



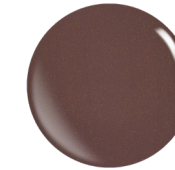
Natural Luster



Toffee



Moccasin



B.Y.O.B.



Milk Chocolate



*Toast



Silk Sheets



Satin Slip



Aluminum
Rose Gold



Bliss



Caramel



Roman Coffee



Chocolate Punch



Eye of the Tiger



Vintage Brown



Mochaccino



*Cashmere Wrap



Sand Dollar



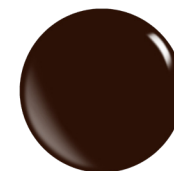
Platinum Rose



Sandbar



Smoked Topaz



That Me Espresso



Capsized



Espresso



Oyster



Heavy Metal



Chiffon



Woodrose



Deja vu



Glitter Beige



Frappuccino



Shipwrecked



Walnut



Couverture



Meet Me at Midnight



Nocturnal



Red-Gold Effect-M



French Roast



Lotus



Cinnamon



Plum Wine



Midas Touch



Heart & Solstice



All That Glitters



Starlight



Gilded Age



Caffe Latte



Earth



Raw Goldstone



Vineyard



Sommelier



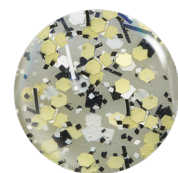
Shimmering Sand Glitter



Pot O Gold



Jackpot!



Splatter, Yellow, Black, and White



Cheers!



24 Karat



Shining Star



Bronze



Heavy Glitter Copper



Uncorked



Bare Minimum



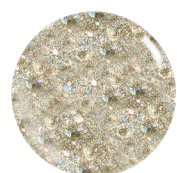
Truth or Bare



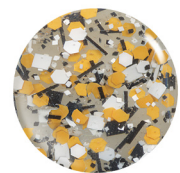
Gold Rush



Et Tu, Brut?



Cocktail Gold



Splatter, Peach, Black, and White



Little Miss Sunshine



Mustard



Gold Jewel



Yellow Gold



He Ghosted Me



Dew Me Up



Metallic Iridescent Gold



Angelic



Fool's Gold



Mystique



Elegance



Dixie



Golden Shimmer



Silver-Gold Effect-M



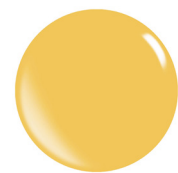
Heavy Glitter Gold



Yellow Brick Road



Sunshine



Cit-rus Got Real! **NC**



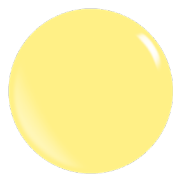
Crème Brulee

NC NON-COMPLIANT

NC NON-COMPLIANT



Banana Milkshake



Brilliant Pastel Chartreuse **NC**



Lemon Squeezy



Honey Dew



Less Is More



Aluminum Green Gold



Green Thumb



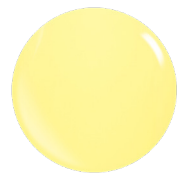
Guacamole



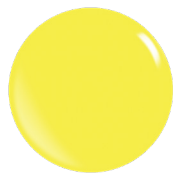
Guac & Roll



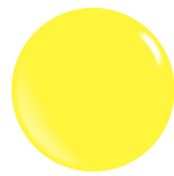
Aluminum Green



Lemonade



Vivid Lemon



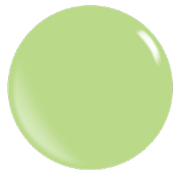
Cyber Yellow **NC**



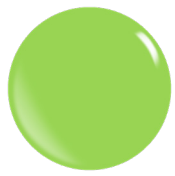
Ellie **NC**



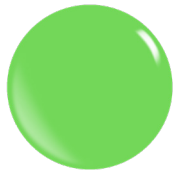
Chantilly



Brilliant Pastel Green **NC**



In the Limelight



Classic Green **NC**



Metallic Apple Green



Green/Neon Yellow Thermogel **NC**



GITD Neon Yellow Green **NC**



Sunburst



Metallic Yellow



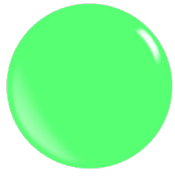
Sunflower



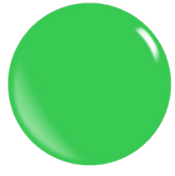
Ellie with Glitter **NC**



GITD Neon Green **NC**



Neon Glow in the Dark Yellow/Green



Slime Time



Morgan with Glitter **NC**



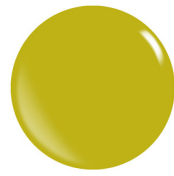
Morgan **NC**



Oasis



Limeade



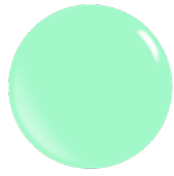
Warm Olive



Van Go



Simply the Zest



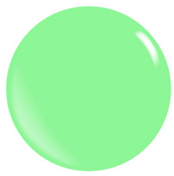
Mint Chip **NC**



Frog Prince



Chino



Summer Green **NC**



Get Clover It



Organic



Leak Green



Atlas



Love Bird **NC**



Lime



Mirabelle



Just My Luck



Teal Bayou



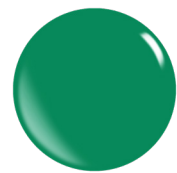
Ibiza Breeze



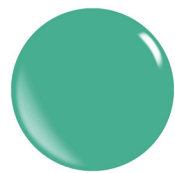
Neon Glow in the Dark Green

NC NON-COMPLIANT

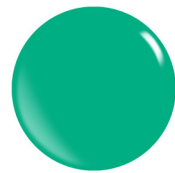
NC NON-COMPLIANT



From Dusk Teal Dawn



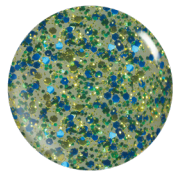
Keep Palm & Carry On



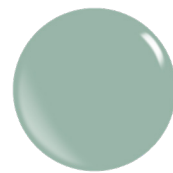
Eucalyptus



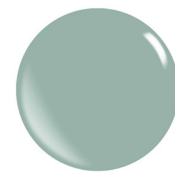
Emerald



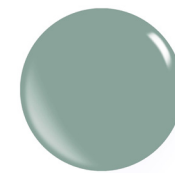
Blue Green Yellow Glitter



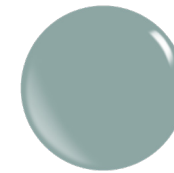
Mint Condition



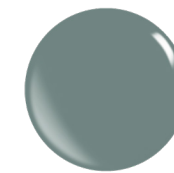
Mint to Be



Muddled Mojito



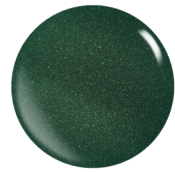
Duck Egg



Sage Wisdom



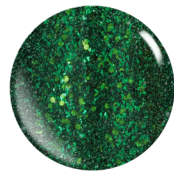
Guccy Green



Spruce It Up



Holly



Heavy Glitter Green



Forever Evergreen



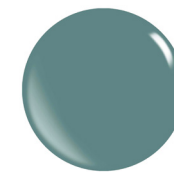
Ocean Drive



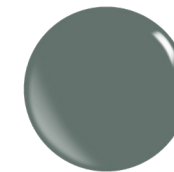
Teal Stone



Aluminum Aqua



Elf Made



Eucalyptus Leaf



Military Olive



Underworld



Mysterious Green



Mascara



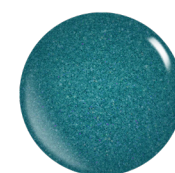
Planktonic



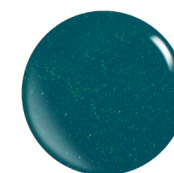
I'm Cerulean To You **NC**



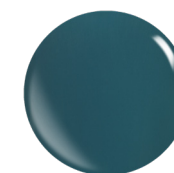
Nautical



Peacocking



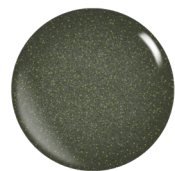
Cyan



Paradiso



Organic



Under the Mistletoe



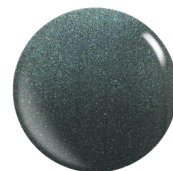
Green-Gold Effect-M



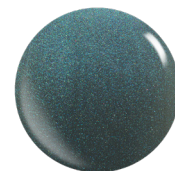
Twilight



Dark Forest



Green-Silver Effect-M



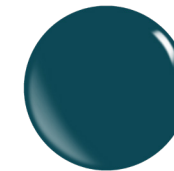
Blue-Green Effect-M



Blue-Silver Effect-M



Glamour Green



Lost Lagoon



Forbidden Forest



Petrol



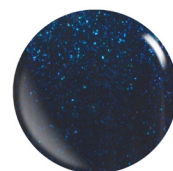
Shadow



Blue-Gold Effect-M



Harlequin



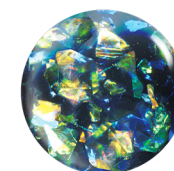
Blue Effect



Deep Dive



Calypso



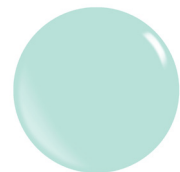
Opal Foil



Catalina Blue

NC NON-COMPLIANT

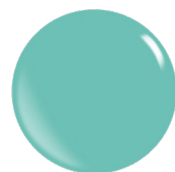
NC NON-COMPLIANT | SH SHEER



Caribbean Sea **NC**



Billiard **NC**



Atlantis



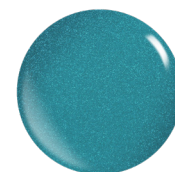
Breakfast at Tiffany's



Jade



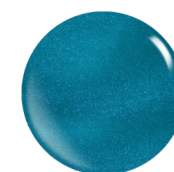
Scuba Blue **NC**



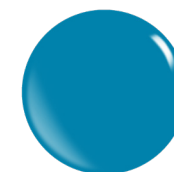
Metallic Teal Blue



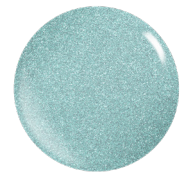
Curious Blue



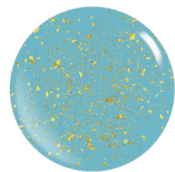
Aquarian Age



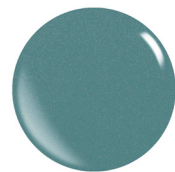
Caribbean Sea



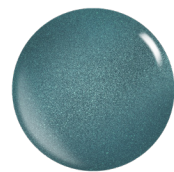
Metallic Mint Cream



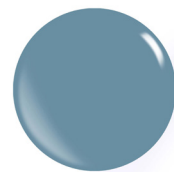
Atlantis Gold Flake



Teal Shimmer



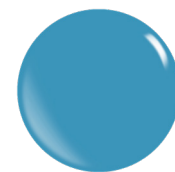
Tealekenisis



Forget Me Not



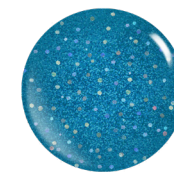
Spaceship



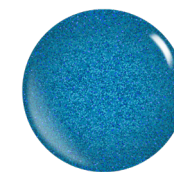
Let's Party



Dye Hard



Blowing Bubbles



Under the Sea



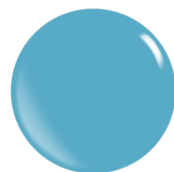
Skylight **SH**



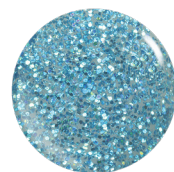
Seabreeze



*Magic Mint



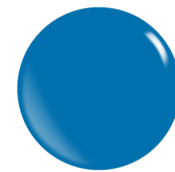
Blue Curacao



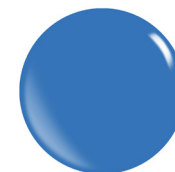
Blue Glitter



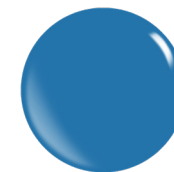
Metallic Hawaiian Blue



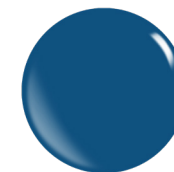
Paradise



It's a Boy



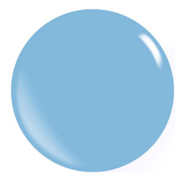
Pool Party



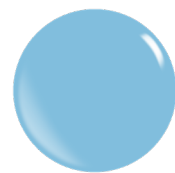
Mykonos Blue



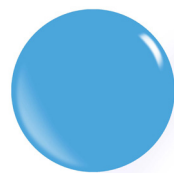
Sea Angel



Nauti Girl



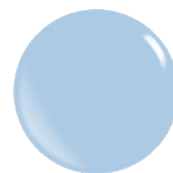
Flashing Lights



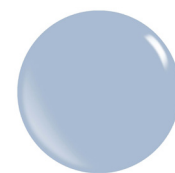
Blue Moon



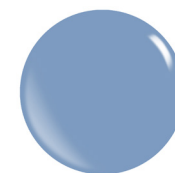
Neon Glow in the Dark Blue



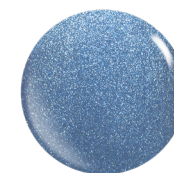
Brilliant Pastel Blue **NC**



April Showers



Blue Heron



Sapphire



Rain



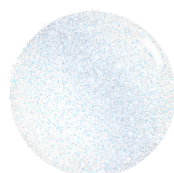
Metallic Iridescent Green



Clearly Aqua **SH**



Iridescent Blue Effect Light



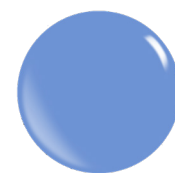
Iridescent Blue Effect Heavy



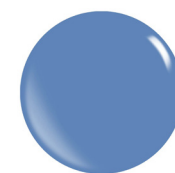
Metallic Iridescent Blue



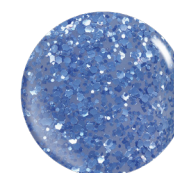
Iris



Nothing But Blue Skies



Ocean Waves



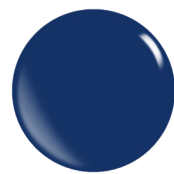
Periwinkle Glitter



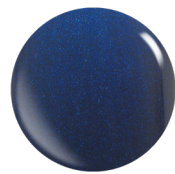
Bright Sky's

NC NON-COMPLIANT | **SH** SHEER | * KNOWN TO FADE

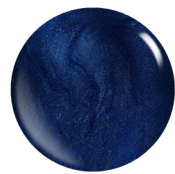
NC NON-COMPLIANT



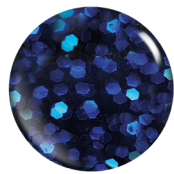
Make it Reign



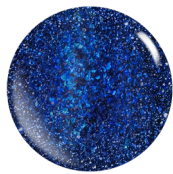
Blue Velvet



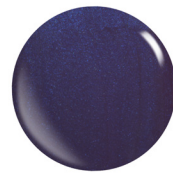
Into the Abyss



Small Foil Royal Blue



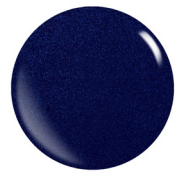
Heavy Glitter Blue



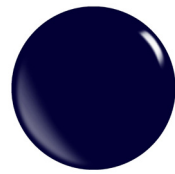
Genie in a Bottle



Into the Abyss



Blue Christmas



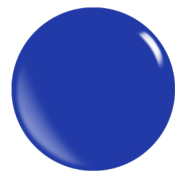
Tidal Wave



Anchors Aweigh!



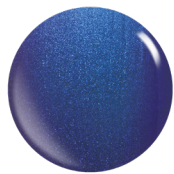
Electric Blue



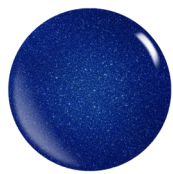
Blue Bonnet



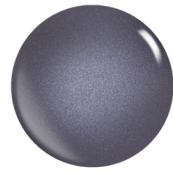
Nyx



Aluminum Blue



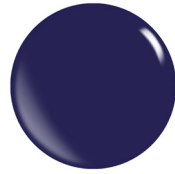
Ocean Eyes



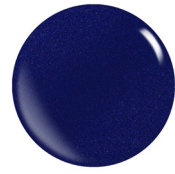
Tin Angel



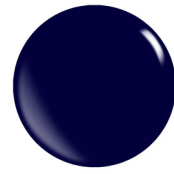
Fedora



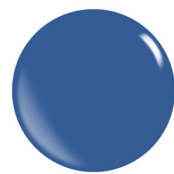
Libertine Night



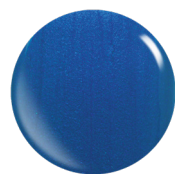
Royal Flush



Nebula



Ocean Breeze



Poseidon



Four of a Kind



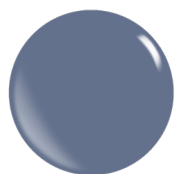
Cruise Control



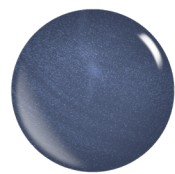
Star Spangled



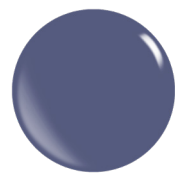
Amazing Grays



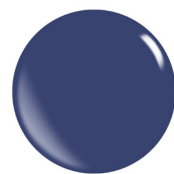
Citadel



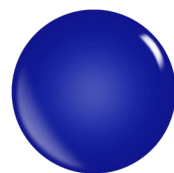
Tide Down



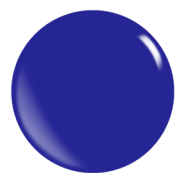
Harvest Moon



Vitamin Sea



Sapphire Glass



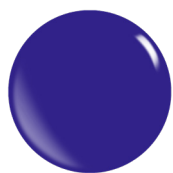
Against The Tide



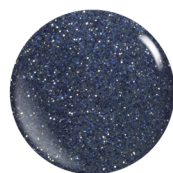
Midnight



Bay Blue



I'm So Jelly **NC**



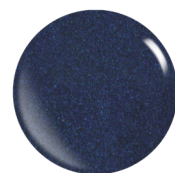
Blue Sky



Sock'em Blue



Doom & Bloom



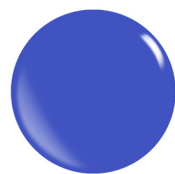
Pin up Blue



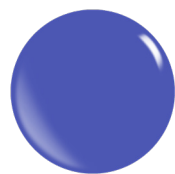
You're on Sapphire



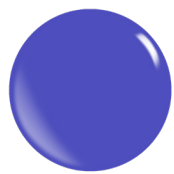
Classic Blue Frost



Strong Blue



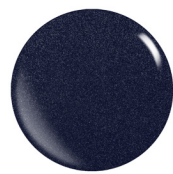
Static Blue



Obsessed



Wonder Woman



Milky Way



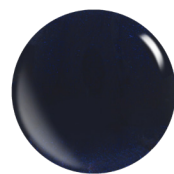
Siren's Song



Deadly Nightshade



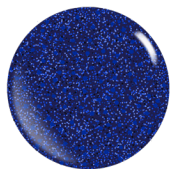
Posiden's Power



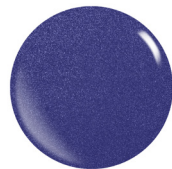
Mirage

NC NON-COMPLIANT

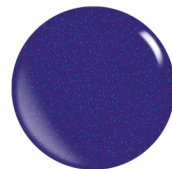
NC NON-COMPLIANT



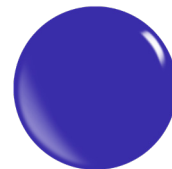
Kaleidoscope



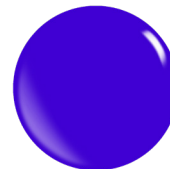
Blue Shimmer



Blueberry



Blinkin' Beauty



Neon Glow in the Dark Purple



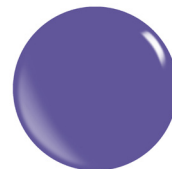
Galactic Conquest



Rouge



Metallic Grape



Picaso



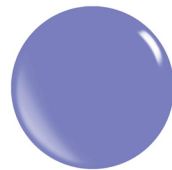
Royale



Violet/Sky Blue Thermo **NC**



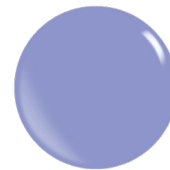
Fortuna



Purple Crème



Seashell Blue



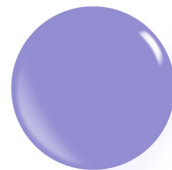
Gossip



Tanzanite



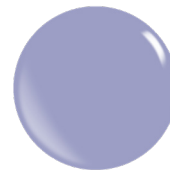
Ce Soir



Wink Wink



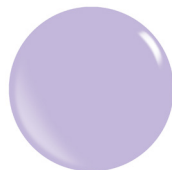
Metallic Grey Violet



Lavender Mist



Lilac You A Lot



Purple Heather



Persian Violet



Gray Lilac **SH**



Frosty

NC NON-COMPLIANT | **SH** SHEER





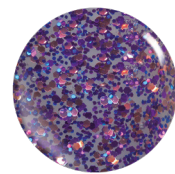
Lilac Glitter



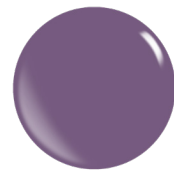
Amethyst



*Mascarade



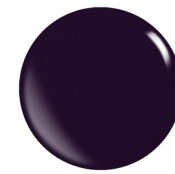
Pink/Purple/Blue Glitter



Antique Thistle



Affair



Majestic



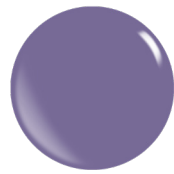
End of Iris



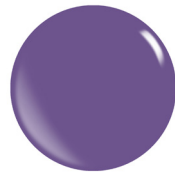
Night Owl



Nevermore



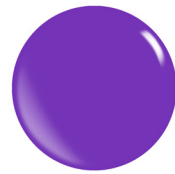
Polar Purple



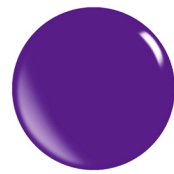
Aura



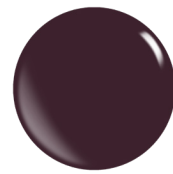
Neon Glow in the Dark Pink/Purple



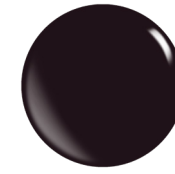
Deep Lavender **NC**



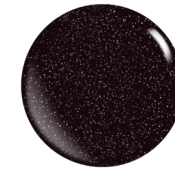
Grape Crush **NC**



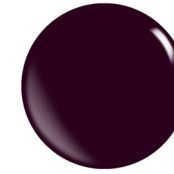
Lovecraft



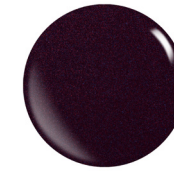
Fatal Attraction



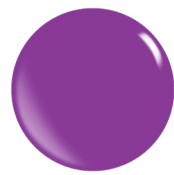
Starry Night



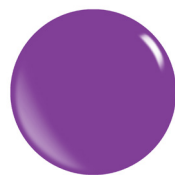
Plum



Sugarplum



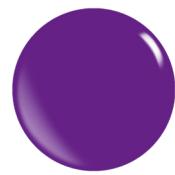
Electric Shine



Va-Va-Voom



Runaway



Mad for Magenta **NC**



Electric Purple **NC**



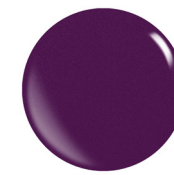
Dark Divination



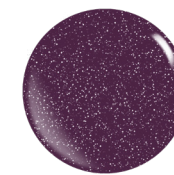
Deep Violet



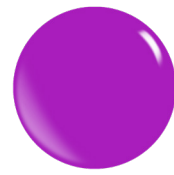
Purple Shimmer



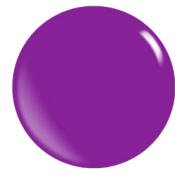
RSVP



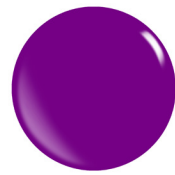
LF Plum



Fuchsia Frenzy



Glow On



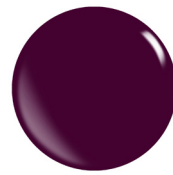
Byzantium **NC**



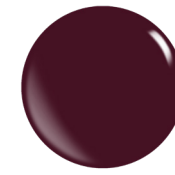
Ava **NC**



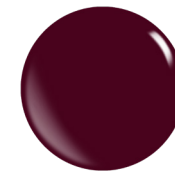
Grape Crush



NY Nights **NC**



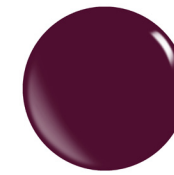
Tyrian Purple



Rouge Noir



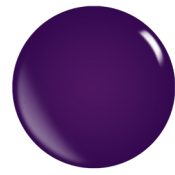
Gothic Grape



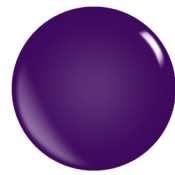
Purple Potion



Calypso's Curse



Eggplanted



Violet Glass



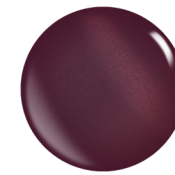
Hocus Pocus



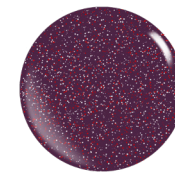
Aluminum Purple



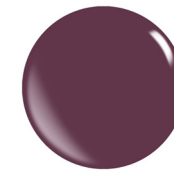
Flexitarian



Plumage



Glitter Plum



Raisin



Sugar Plum Fairy



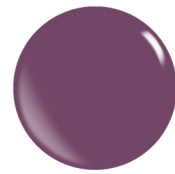
Bossanova



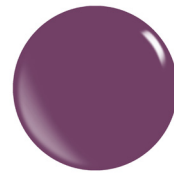
Plum Caspia



Love Spell



Through the Grapevine



Cad in Sky



Making Mauves



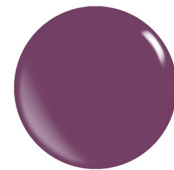
Razzle Dazzle



Berry Fine **NC**



Chrome Plum



May Flowers



Heavy Glitter Purple



Enchanted



Artifuschial Intelligence



Rose to the Occasion



Island Orchid



Fuchsia Glitter



Ava with Glitter **NC**



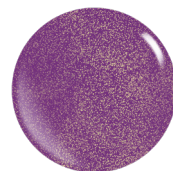
Metallic Magenta



Purple-Pink



Back to the Fuchsia



Your Majesty



Dreams



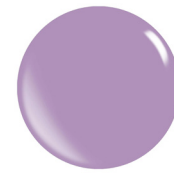
Seashell Violet



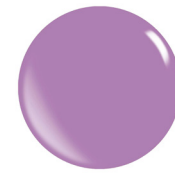
Metallic Pale Violet Red



Fuchsia Rose



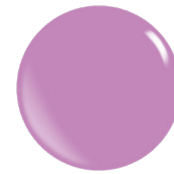
Lavish Lilac



Lavender Sky



High on Hydrangea



Brilliant Pastel Violet **NC**



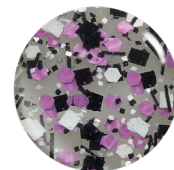
Hidden Treasure



Peony



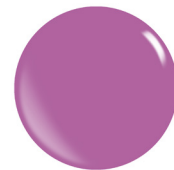
Crocus



Splatter, Purple, Black, and White



Better Together



Mermaids Tail **NC**



Metallic Iridescent Violet



Frozen



Lavender Haze



Just Enough



Sweetheart



GITD Neon Purple **NC**



Purple/Turquoise Glitter Thermo **NC**



Dune



Moiré



Lavender Crunch



Seashell Purple



Metallic Plum



Stronger



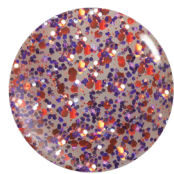
Melrose



Star Crossed

NC NON-COMPLIANT

NC NON-COMPLIANT



Pink/Purple/Orange
Glitter



Rose Stone



Yamaha Purple



Peony for Your Thoughts



Rosy Brown



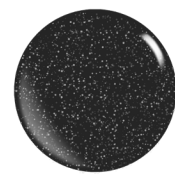
Vertigo



Your Own Asphalt



DeGoya



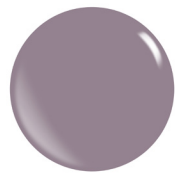
Ore What



Inkwell



*Purple Rain



Shimmering Dove



Red-Silver Effect-M



Gluhwein



Everlasting Lilac



Nearly Black



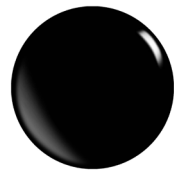
Electric Black



Black



Ash



Love Bites



Grapeful 4 U



Moon



Concrete Jungle



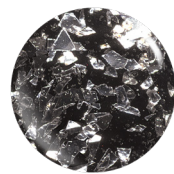
Fossil



Glistening Thistle



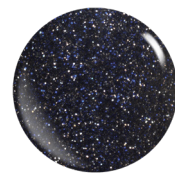
Bronze Foil



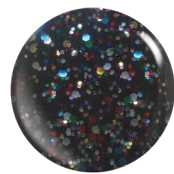
Silver Foil



Silver Effect-M



Moon & Stars



New Years Eve



Amulet



Rebellion



*Smokey Plum



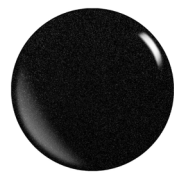
*Mamba



Sassafras



Bad Reputation



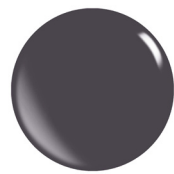
Spades



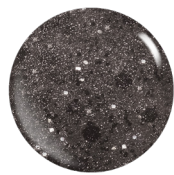
Anthracite



*SilverEffect



Stone Cold



Cocktail Black



Dark Nights



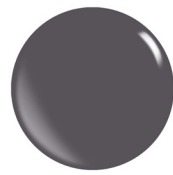
Smokemist



Paradox



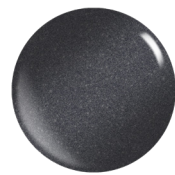
Pinot Noir



Stormy Skies



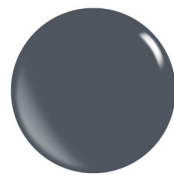
Asphalt



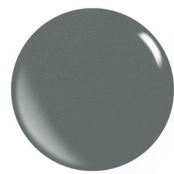
Dim Gray



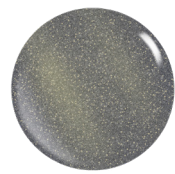
Folkstone Grey



Shanghai Mist



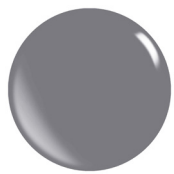
Later Gator



Starstruck



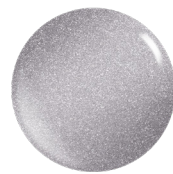
Midnight Moon



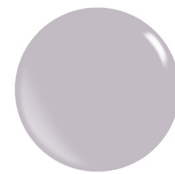
Peace & Dove



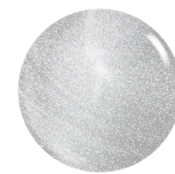
Iced Macchiato



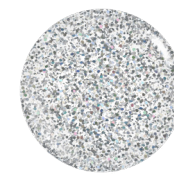
Tinsel



Mon et Ton



The Silver Lining



Magnetic Field



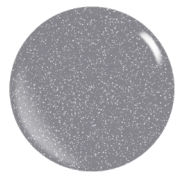
High Card



Stormy Sea



Gunmetal



Iridescent Grey



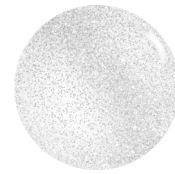
Diamond Mine



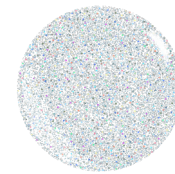
Timber Wolf



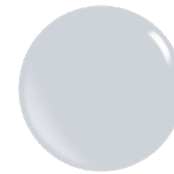
Diamonds



Limited Edition



Holo Lover



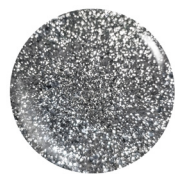
Frostbite



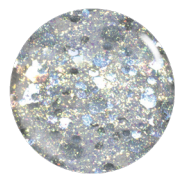
Hey Sugar



Silver Cloud



Silver Dust



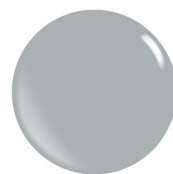
Small Foil Silver



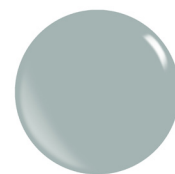
Silver Glitter



End of the Rainbow



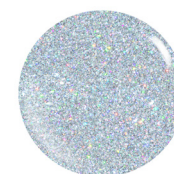
Dalicious



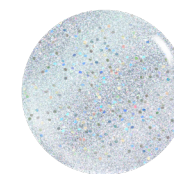
Metal



Chenille



Heavy Glitter
Holo Silver



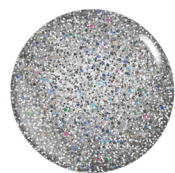
Glitter Mermaid



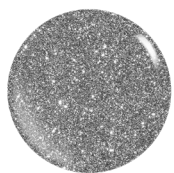
Heavy Glitter Holo



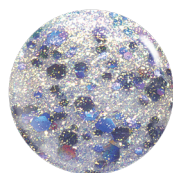
Black Splatter



Grand Prismatic



Diamond Dust



Small Gold Foil



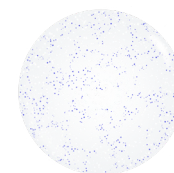
Bones



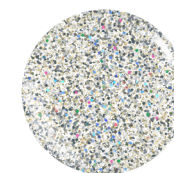
Nimbus Cloud **SH**



Shimmer White



Snowflakes



Play It Jewel



The More You Grow



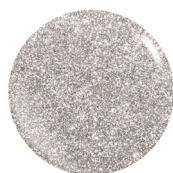
Rock Ridge



Mushroom



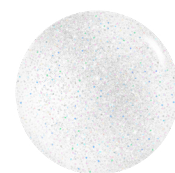
Bouclé



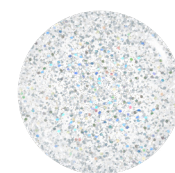
Heavy Glitter Silver



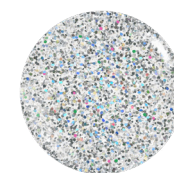
What a Pearl Wants



Disco Ball



Glittering Galaxies



Bejeweled



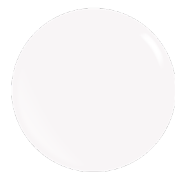
Just Chillin'

NC NON-COMPLIANT

NC NON-COMPLIANT | SH SHEER



Bubbly



White



Sleigh Bells



Celestial Aura



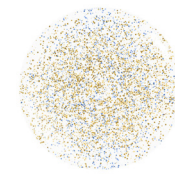
White (Bright)



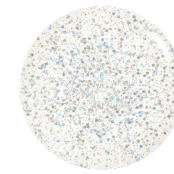
Stripped



Stark



Ever After



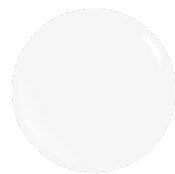
Shake Your Snowglobe



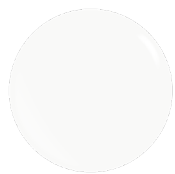
Splatter White,
Silver & Gold



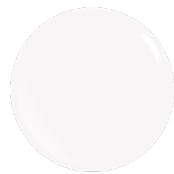
Ghost



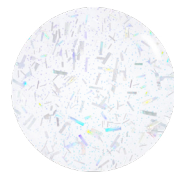
Satin Sheets



Whiteout



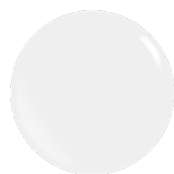
Peter Cottontail



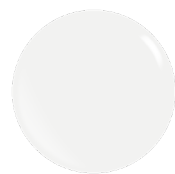
Shattered Glass



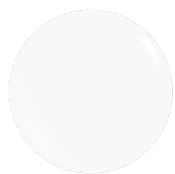
Pearl Drop



Got Milk?



All Fluff



Head in the Clouds



Electric White



Glitter White



On Cloud 9



GITD Neon Blue **NC**



White (Chalk)



X-White



Cinderella



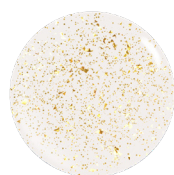
White Smoke



Elegance



Ice Queen



Cinderella Gold



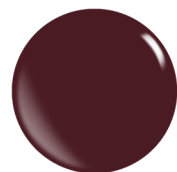
Metallic Wheat

NC NON-COMPLIANT

NC NON-COMPLIANT



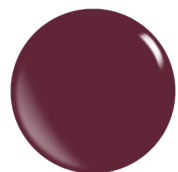
COLOR POWDERS



Mull It Over



Burgundy Creme



Wine About It



Girls & Boysenberry



Hypebeast



Lotus **NC**



Magic Wand **NC**



Candy Coated Translucent Powder Hot Pink



Jolt



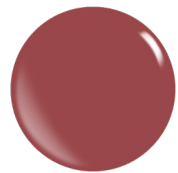
Neon Pink **NC**



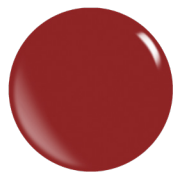
GEM Fine Wine



Red Maple Glitter



Crimson Peak



Hibiscus



Disco Inferno



Maui **NC**



Cherry



Purplish Red Glitter



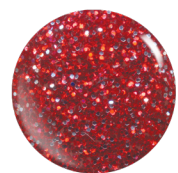
Mauve Glitter



Pink Shimmer



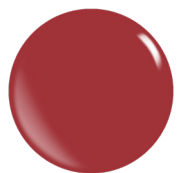
Opera



Red Shimmer



Bora Bora



Scarlet Fever



Red Bottoms



Metallic Red



Sparkling Red



Ladylike



Blush Hour



ICO Dramatic Pink



GEM Starlet



Pure Red



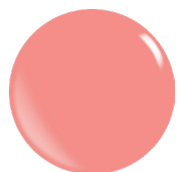
Bright Pink/Orange Glitter **NC**



Bright Pink/Orange **NC**



Bright Red **NC**



Rose Quartz Deep Creme



Be Mine **NC**



Candy Coated Translucent Coral



Pastel Pink



Rose Quartz Pearl



Neon Glow Pink **NC**



Bright Pink Glitter **NC**



Hot Pink



Bright Pink **NC**



Fuchsia Glitter



Metallic Pink



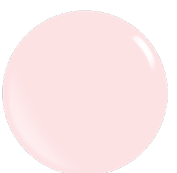
ICO Pink



Pearlescent



Delicate



Ballet Slipper Powder



Crush



Whipped



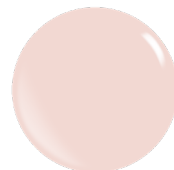
Lush



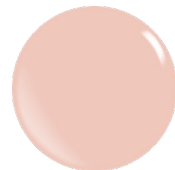
Fawn



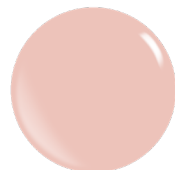
ICO Dark Pink



Peaches & Cream



Rose Quartz
Soft Creme



Peachy Keen



Rose Quartz



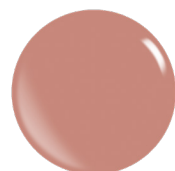
Cameo



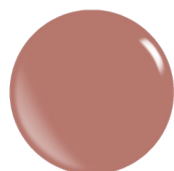
Champagne



Flesh



Poised



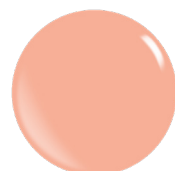
Flirtatious



Rose Quartz Shimmer



Cover Pink Effects



Cover Rose



Rose Quartz Glitter



Shell



Sparkling Pink



ICO Peach



Porcelain



Custard Creme

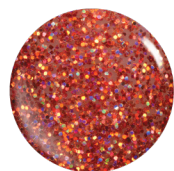


Toasted Almond



Just Peachy





Copper Shimmer



It's Fire



Bright Orange **NC**



Papaya



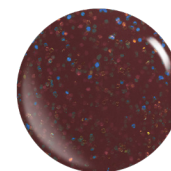
Neon Glow Orange **NC**



GEM Amulette



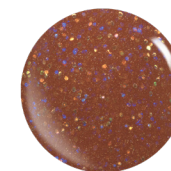
Pure Brown



Dark Brown Glitter



Caffeinated



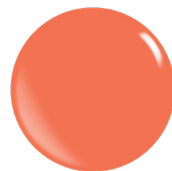
Russett Glitter



Call Me **NC**



Dark Orange
Glitter



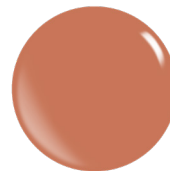
Coral Pink



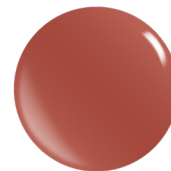
Pure Orange



Bright Orange
Glitter **NC**



Peach Tea



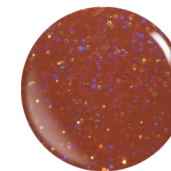
Sienna Silk



GEM
Citrine Chic



Carriage



Brick Glitter



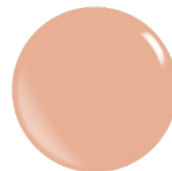
Metallic Orange



Bashful



Sparkling Orange



Cover Beige Effect



Peach Buff



GEM Golden Glow



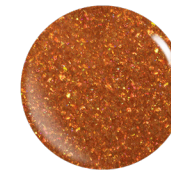
Merengue



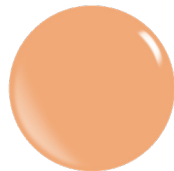
GEM Bold Couture



Vegan Leather



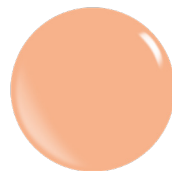
GEM Vintage



Peach Bellini



Pastel Peach



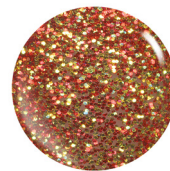
Cover Peach



Pretty in Peach



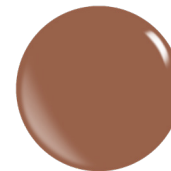
Bisque



Valentine



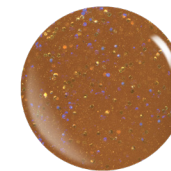
Tiara



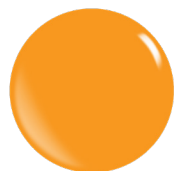
Cinnamon Sugar



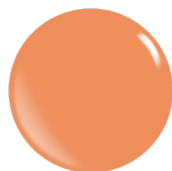
Metallic Gold



Copper Glitter



Bright Light Orange **NC**



Light Orange



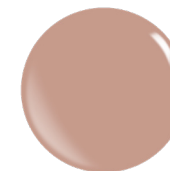
Mango



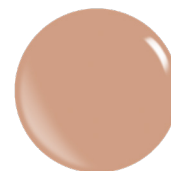
Bright Orange/
Yellow Glitter **NC**



Neon Orange **NC**



Rosy Delight



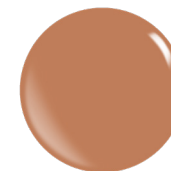
Discrete



Warm Biscotti



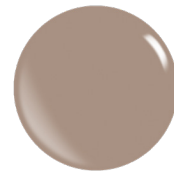
Confident



Under Cover



Sugar Cookie



Serenity



Creamy Mocha



Sparkling Gold



Metallic Yellow



Storm



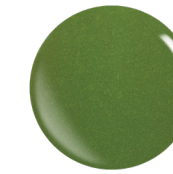
Sparkling Green



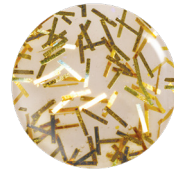
Bright Green **NC**



Pear



Pure Green



Confetti Gold



Gold Shimmer



Gold Dust



GEM 24 Karat



Pure Yellow



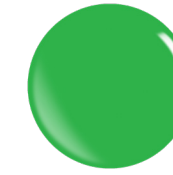
Metallic Green



Always **NC**



Neon Green **NC**



Neon Glow Green **NC**



Bright Green Glitter **NC**



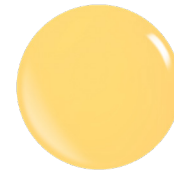
GEM Elegance



Genie Lamp



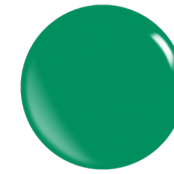
Lemon Yellow



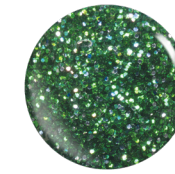
Pastel Yellow



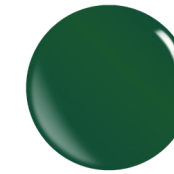
Gold Glitter



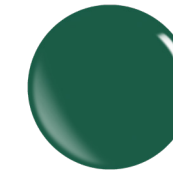
Watermelon



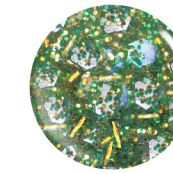
Green Shimmer



Green Scene



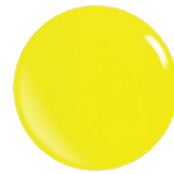
Fiji



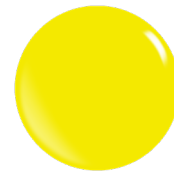
St. Patrick's Day



Yellow Glitter



Bright Yellow **NC**



Neon Glow Yellow **NC**



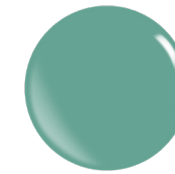
Bright Yellow Glitter **NC**



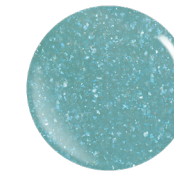
Pastel Green



Pixie Dust



Lagoon **NC**



Miss U **NC**



Candy Coated Translucent Mint



Pastel Blue



Candy Coated Translucent Lemon



Neon Yellow **NC**



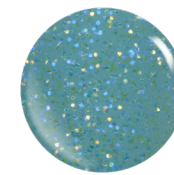
Be Sweet



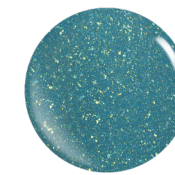
Green Glitter



Summer Fun



Seafoam Glitter



GEM Ocean Drive



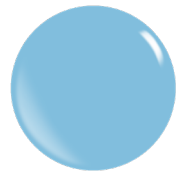
Metallic Blue



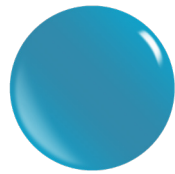
Hint of Mint



Candy Coated Translucent Turquoise



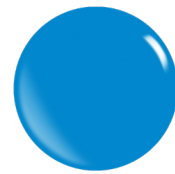
Flashing Lights



Dye Hard



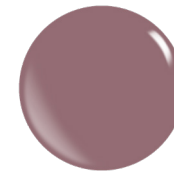
Neon Blue **NC**



Neon Glow Blue **NC**



Bright Blue **NC**



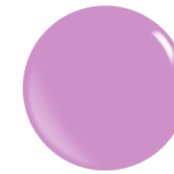
Obsessed



Pastel Lavender



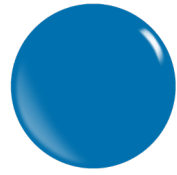
Metallic Rose



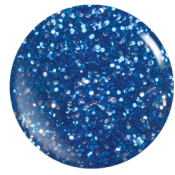
Better Together



Pop To it



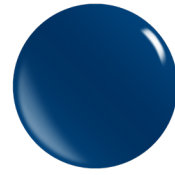
Paradise



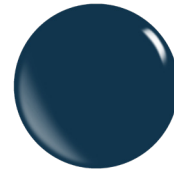
Turquoise Shimmer



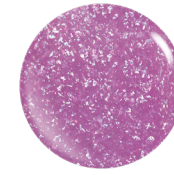
Marine Blue



Maximum Volume



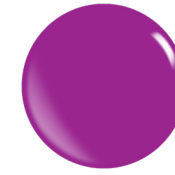
Midnight Drop



True Love **NC**



Passion Fruit



Paradise **NC**



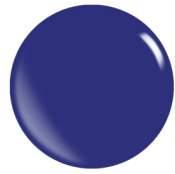
Bright Purple **NC**



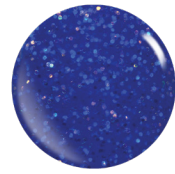
Bright Purple
Glitter **NC**



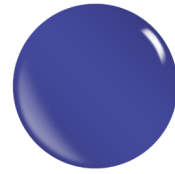
Pure Blue



Dark Blue Purple



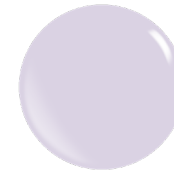
Electric Blue Glitter



Fearless



GEM Pin Up Blue



Bare with Me



Sparkling Purple



Purple Shimmer



Pink



Fairy God Mother



Azure **NC**



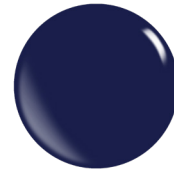
Light Blue



Prince Charming



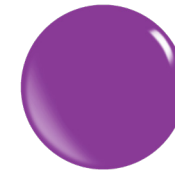
GEM Royale



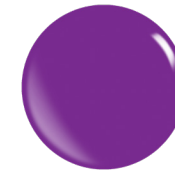
Indie Go



Candy Coated
Translucent Purple



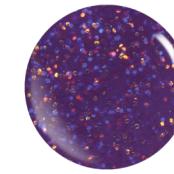
Electric Shine



Neon Glow Purple **NC**



Grape



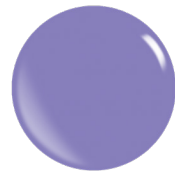
Indigo Glitter



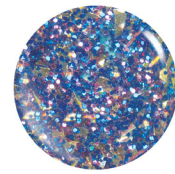
Musical



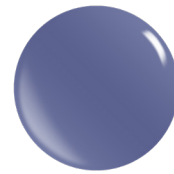
Metallic Purple



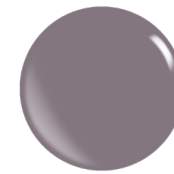
Light Blue Purple



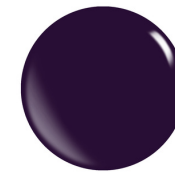
Carnaval in Rio



Enter The Void



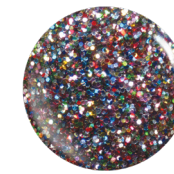
Moxie



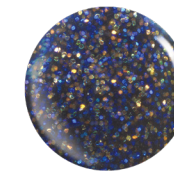
Pure Violet



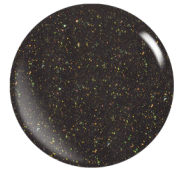
Bali



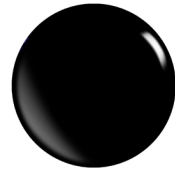
Multicolor Shimmer



Black Glitter



GEM
Old Fashioned



Pure Black



GEM
Black Diamonds



Fearless



Charcoal Grey



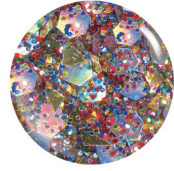
Pure White



ICO White



Glass Slipper



Carnaval in Venice



Silver Shimmer



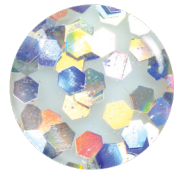
GEM
Diamond Mine



Confetti Silver



Sparkling Silver



Carnival



Mirror Chic



Metallic Silver



Mirror Mirror



Dystopia Rising



Confetti Multicolor



Parade



Glitz and Glam



Metallic White



Sparkle



Made in Nature



White Glitter



Glitter



Misty Glitter



Silver Glitter

keystone[®]
cosmetics & sciences

EUROPE

BATAVENWEG 5-7
5349BC OSS, THE NETHERLANDS
+31 412 693 100
SALES@KEYSTONE-EUROPE.NL
KEYSTONECOSMETICS.COM

USA

480 S DEMOCRAT ROAD
GIBBSTOWN, NJ 08027
+1 856 663 4700
INFO@KRANDP.COM
KEYSTONECOSMETICS.COM