



COMPANY OVERVIEW
AND PRODUCT CATALOG

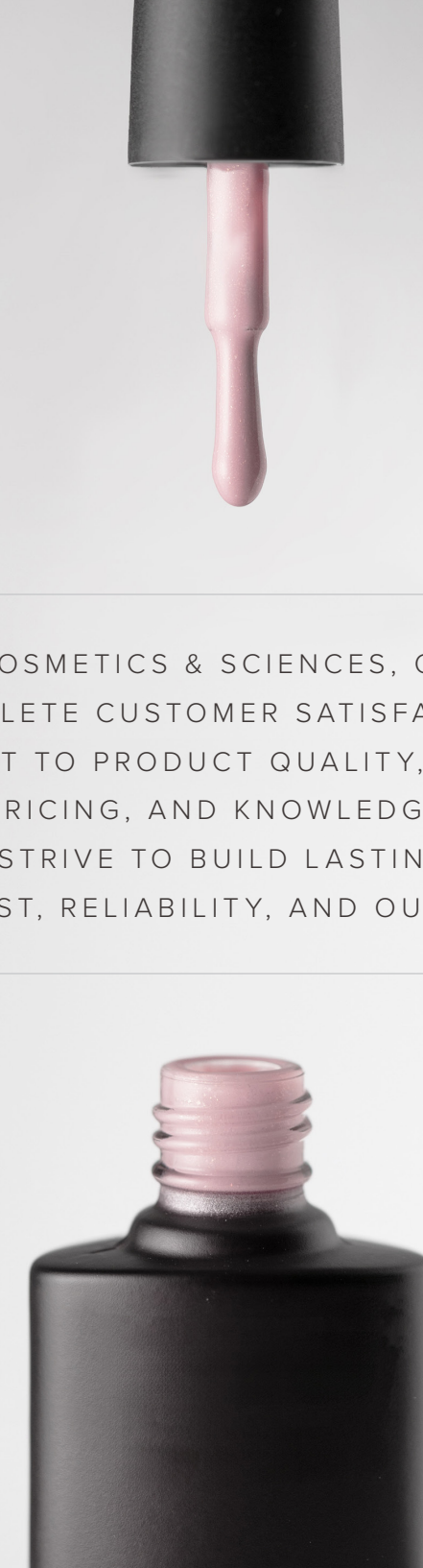


COMPANY OVERVIEW

DEDICATION TO CUSTOMERS	4
COMPANY OVERVIEW	6
LOCATIONS	8
FORMULA OVERVIEW	12
TURNKEY PACKAGING	14
QUALITY CONTROL	16
SUSTAINABILITY	18
CONTRACT MANUFACTURING	20
REGULATORY	22
TERMS & CONDITIONS	24

DEDICATION TO CUSTOMERS IS OUR #1 PRIORITY

Since 1908, Keystone Industries has been a leader in high-tech formulations, with over a century of experience in producing cutting-edge materials that exceed industry standards. Our mission is to provide top-quality materials that enhance performance, reliability, safety, and efficiency. We are committed to continuous innovation, delivering products that meet the evolving needs of professionals and consistently exceed customer expectations.



AT KEYSTONE COSMETICS & SCIENCES, OUR MISSION IS TO ACHIEVE COMPLETE CUSTOMER SATISFACTION. THROUGH OUR COMMITMENT TO PRODUCT QUALITY, ON-TIME DELIVERY, COMPETITIVE PRICING, AND KNOWLEDGEABLE CUSTOMER SUPPORT, WE STRIVE TO BUILD LASTING PARTNERSHIPS FOUNDED ON TRUST, RELIABILITY, AND OUTSTANDING SERVICE.



“ KEYSTONE’S LONGEVITY CAN BE ATTRIBUTED TO OUR **UNIQUE PRODUCT LINES, COMPETITIVE PRICING, AND CUSTOMER SATISFACTION.** ”

COMPANY OVERVIEW

Keystone Industries is a privately held company with a diverse portfolio of subsidiaries specializing in the manufacturing and distribution of cosmetics, dental, purified and sterile water. Our cosmetic manufacturing division, **Keystone Cosmetics & Sciences**, produces high-quality stock and custom fingernail coating formulations.

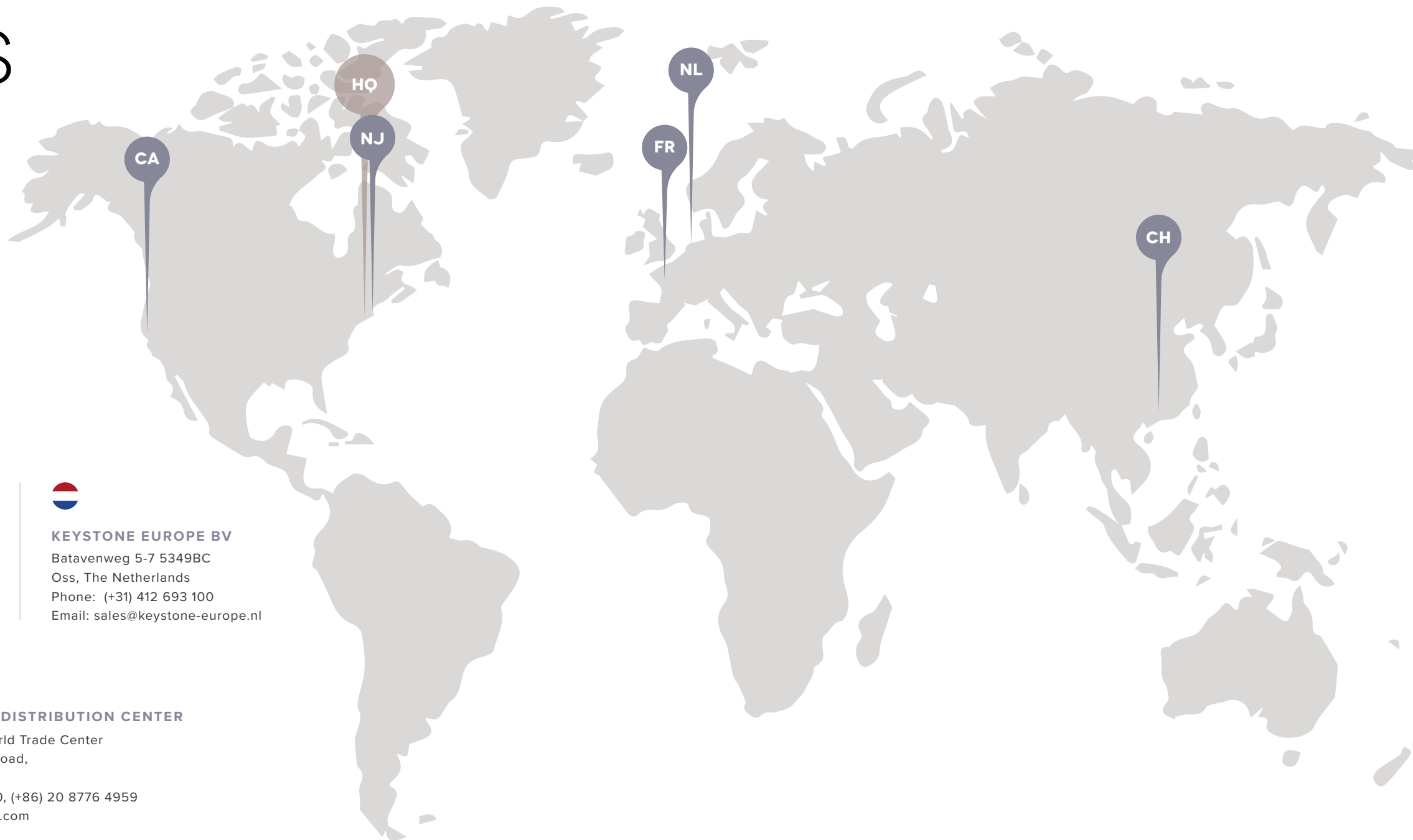
We are dedicated to exceeding customer expectations, measuring our success through customer loyalty and consistent growth. Our clients benefit from direct access to our entire team—including research, manufacturing, and support—ensuring a seamless experience and collaborative product development process.

LOCATIONS



CORPORATE HEADQUARTERS

480 S. Democrat Road
Gibbstown, NJ 08027
Phone: (1) 856 663 4700
Email: info@krandp.com



CHERRY HILL OFFICE

616 Hollywood Avenue
Cherry Hill, NJ 08002
Phone: (+1) 856 663 4700



CALIFORNIA OFFICE

7530 Suzi Lane
Westminster, CA 92683
Phone: (+1) 714 890 3900



KEYSTONE EUROPE BV

Batavenweg 5-7 5349BC
Oss, The Netherlands
Phone: (+31) 412 693 100
Email: sales@keystone-europe.nl



C7 PRODUCTION

9 Chemin de la Chatte,
87290 Saint-Sornin-Leulac, FR
Phone: (+33) 5 55 76 20 83
Email: info@centre7.com



CHINA - GUANGZHOU DISTRIBUTION CENTER

Unit 1505, North Tower, World Trade Center
No. 371-375 Huanshi-East Road,
Guangzhou, 510095, China
Phone: (+86) 20 8776 7990, (+86) 20 8776 4959
Email: sales@keystone-asia.com

“

DEVELOPED IN PARTNERSHIP WITH LEADING
NAIL ARTISTS AND EDUCATORS WORLDWIDE,
OUR PRODUCTS COMBINE PROFESSIONAL
EXPERTISE WITH CONTINUOUS INNOVATION.
WE REGULARLY REFINE OUR FORMULATIONS
AND CREATE NEW MATERIALS TO MAINTAIN
OUR POSITION AS AN INDUSTRY LEADER.

”



FORMULA OVERVIEW



UV/LED GELS

UV/LED gels are a versatile alternative to the traditional liquid/powder systems. These materials offer the benefit of reduced odor, quick application and natural appearing enhancements. We offer a range of gels for every technician level. Keystone Cosmetics & Sciences offers a full line of UV/LED, traditional, soak off and GelPolish™ gels including base, builder, and top gels. Highly pigmented color gels are also available for all nail art needs. Many of our products are suitable for retail sales.



SPECIALTY COATINGS

Keystone Cosmetics & Sciences offers a line of air-dry nail coatings. Our materials include base coats, top coats and nail strengtheners for both artificial and natural nails.



POLYMERS & MONOMERS

All polymers are manufactured using high quality raw materials. Our polymers are designed for all performance levels and offer the best control and product clarity available.

Specialty formulated monomers are used in combination with standard polymers to create the finest nail enhancement products. When used together as a system, these polymers and monomers yield superior results.

In addition to clear polymers, a range of colored polymers are available. These include shades of pink, natural, white, and highly pigmented polymers.



ACCESSORIES

To complement our enhancement products, Keystone offers a full range of complementary nail accessories. Key products include preps, primers, accelerators, cuticle oils, and product removers. These materials were developed to supplement your private label line so you can rely on Keystone Cosmetics & Sciences for all of your product needs.

— Many of our products are suitable for retail sales —



WE FORMULATE OUR PRODUCTS TO A HIGHER STANDARD: **EVERY FORMULA IS RIGOROUSLY TESTED UNDER BOTH DUAL WAVE AND LED LIGHTS TO ENSURE OPTIMAL PERFORMANCE.**

QUALITY CONTROL

Quality is built into the design of Keystone's products. Raw materials are carefully selected and formulations are vigorously tested for functionality and stability, prior to being commercially manufactured.

Once production begins, the Keystone Quality Control team uses advanced knowledge of product chemistries, production processes, and testing methodologies to ensure that every outgoing batch meets our customers' high quality standards.

Our comprehensive quality process combines analytical, physical property, and functional testing. Each batch is tested at several key points throughout the manufacturing process to verify product consistency and performance.

IF CUSTOMER QUALITY REQUIREMENTS EXPAND BEYOND THE SCOPE OF KEYSTONE'S CAPABILITIES, KEYSTONE HAS RELATIONSHIPS WITH SEVERAL OUTSTANDING CONTRACT ANALYTICAL LABORATORIES WITH QUICK TURNAROUND TIMES FOR NON-STANDARD TESTING.



CHEMICAL ANALYSIS (COMPOSITION, IDENTITY, PURITY)

- ✓ High Performance Liquid Chromatography (HPLC)
- ✓ Gel Permeation Chromatography (GPC)
- ✓ Infrared Spectroscopy (FTIR)
- ✓ Gas Chromatography (GC-FID and MS)
- ✓ UV-VIS Spectroscopy
- ✓ pH Meters



PHYSICAL PROPERTY TESTING

- ✓ Color: Spectrophotometer and visual assessment
- ✓ Particle Size Analysis: Laser Light Diffraction of wet and dry samples
- ✓ Viscosity/Thickness: rotary and cone and plate viscometers
- ✓ Film characteristics: gloss, hardness, thickness
- ✓ Volatile content
- ✓ Density
- ✓ Optical clarity/haze
- ✓ Thermal and UV stability



FUNCTIONAL TESTING

- ✓ Application/workability
- ✓ Feel
- ✓ Odor
- ✓ Setting and cure time

SUSTAINABILITY

KEYSTONE UNDERSTANDS THE **IMPORTANCE OF SUSTAINABILITY**, BOTH FOR OUR BUSINESS AND FOR OUR PLANET.

WE BELIEVE THAT:

- ✓ All employees deserve a safe, inclusive, and supportive work environment
- ✓ We must protect and give back to our local communities
- ✓ We must minimize our impact on the environment
- ✓ We must strive for ethical growth



➡ SUSTAINABILITY INITIATIVES AND FUTURE GOALS



SOLAR PANEL INSTALLATION: GIBBSTOWN

Solar panels were installed to cover our parking lot and walkway. They will generate 2.5 million kWh, enough to power 230 homes, and are equivalent to reducing power plant carbon dioxide emissions by > 3.6 million pounds of carbon dioxide .



GREEN TEAM:

All our US manufacturing facilities have a “Green Team” to implement and promote sustainability initiatives. They have revamped recycling programs, implemented waste governance and reduction processes, converted to LED lighting, and begun planning an aquaponics system to support our Gibbstown cafeteria. Green Team members also share monthly sustainability tips to help raise awareness.



KEYSTONE CARES:

This program supports our local communities with charitable donations and volunteering. Our future goal is to dedicate 1% of our gross sales to improving our community.



RESEARCH AND DEVELOPMENT:

Keystone developed a fingernail care line of bio-based accessories and removers, and will continue to develop more eco-friendly chemistries and packaging options.

THINK GREEN
REDUCE. REUSE. RECYCLE.

CONTRACT MANUFACTURING

COSMETIC PRODUCTS

In addition to offering our standard product line, Keystone Cosmetics & Sciences helps customers develop specialty products exclusive to their own line. Our research and development staff will work with you to formulate products that meet your requirements and specifications.

We employ a full staff of laboratory chemists, engineers, and quality control scientists. Our staff is available to customers for technical support and product development inquiries.

Minimum order quantities are required for specialty formulations and vary depending on the type of product developed.

PHARMACEUTICAL SPECIALTY FORMULATIONS AND TOLL MANUFACTURING

Keystone Cosmetics & Sciences is equipped to run small and intermediate sized batches of different chemistries. Our experienced laboratory and production staff enables us to tailor the work to your precise specifications. Simple projects can involve running your desired batch size of an already developed process. More complex projects can involve everything from statistical of experiments, to small-scale batches, to full-scale batches, and process development. Various processing and purification techniques are also available to meet your exact requirements.

Product design and scale-up projects can be run (or performed) in compliance with FDA cGMP and our ISO 13485:2016 certified quality system requirements. Non-disclosure agreements can be put in place to protect your proprietary information. Our Cherry Hill facility is ideal for running batches requiring stability testing, process validation or regulatory compliance.





QUALITY. COMPLIANCE. EXCELLENCE.

REGULATORY

Keystone Industries operates a Quality Management System that complies with the FDA's current Good Manufacturing Practices (cGMP) and is certified to ISO 22716 for Cosmetics and ISO 13485 for Medical Devices. Our knowledgeable regulatory team ensures adherence to international regulatory requirements across all activities.

We provide comprehensive product support, including the creation and upkeep of Product Information Files (PIFs) and Cosmetic Product Safety Reports (CPSRs) for cosmetic products sold Globally. These files contain confidential information as required by the FDA's Modernization of Cosmetics Regulation Act of 2022 (MoCRA) and the European Union's Cosmetics Regulation (EC) No. 1223/2009. This includes detailed product formulations, safety and hazard assessments, and raw material technical documentation.

All PIFs and CPSRs are securely maintained on file at Keystone Industries and are made readily accessible to regulatory authorities upon request.

Keystone Industries ensures compliance with EC Regulation 1907/2006 concerning the Registration, Evaluation, Authorization, and Restriction of Chemicals (REACH). Our regulatory and environmental, health and safety teams actively manage obligations under REACH by monitoring substance use, securing required registrations, and maintaining up-to-date documentation on chemical safety and usage.

We collaborate closely with suppliers to obtain necessary safety data and ensure that all substances used in our formulations are pre-registered or registered as appropriate. Safety Data Sheets (SDS) are maintained for all applicable raw materials, and substance evaluations are conducted to assess risk and regulatory status.

Keystone Industries maintains thorough records to support REACH compliance and is prepared to provide documentation to European authorities upon request, ensuring continued market access and adherence to evolving regulatory requirements.

TERMS & CONDITIONS

SAMPLES AND PACKAGING

- Samples of all products are available for testing purposes.
- All products are sold in bulk packaging and turnkey.
- Upon request, filling and complete turnkey is available. Minimum order quantities are required. Contact your representative for more information.

ORDERING

- Goods will be sold only to established wholesalers and distributors.
- Minimum order values must be met before an order is processed.
- Special Orders: We will gladly manufacture non-stock specialty items for our preferred customers. Special orders are subject to a minimum order quantity and are not returnable.

SDS AND REGULATORY

SDS for all products are included with each shipment and made available electronically upon request. PI files are maintained by KCS and are available to regulatory authorities in the event of an audit. Customers are responsible for following all federal, state and local cosmetic labeling and packaging laws.

PRICING

Pricing is dependent on overall order quantities and packaging. Price is subject to change with notice.

RETURN POLICY

All returns require prior return authorization and may be subject to restocking fees. Contact your sales representative for return authorization and a list of instructions on returning damaged or defective product.

DELIVERY WITHIN THE US

KCS allows all domestic customers to ship via the carrier of their choice. If no shipping company is specified on the purchase order, we will use the carrier with the best shipping rate. All freight charges are to be paid by the customer and orders are shipped Freight Collect. Additional services via UPS and FedEx are available depending on the sizes and types of products shipping. Export drop ships are available for a \$100 export processing fee.

DELIVERY OUTSIDE THE US

All EU deliveries must be paid in Euros without exception. All orders ship Ex Works Gibbstown, NJ or Oss, The Netherlands. All China deliveries must be paid in RMB without exception. All orders ship Ex Works Guangzhou, China.

PAYMENT OPTIONS WITHIN THE US

Open accounts may be established following approval of a complete credit application. Open account invoices are payable 30 days from date of invoice. Past due accounts are subject to a finance charge of 1.5% per month. Payments may be made by check, electronic transfer/ACH, wire transfer, or credit card (Mastercard, Visa, American Express). Credit card transactions are subject to a 1.5% fee. All orders are payable in U.S. dollars. Returned checks are subject to a \$25 fee.

PAYMENT OPTIONS OUTSIDE THE US

All orders are to be prepaid by wire transfer or credit card. Visa, MasterCard, and American Express are accepted.

Credit card transactions are subject to a 1.5% surcharge. All orders ship Ex Works from Gibbstown, NJ; Oss, The Netherlands; or Guangzhou, China.



PRODUCT OVERVIEW

A MESSAGE	28	COATINGS	58
GEL SYSTEMS	30	BASE COATS	60
BUILDER GELS	32	TOP COATS	61
WHITE GELS	36	ACCESSORIES	62
OVERLAY GELS	38	NAIL ART	64
COLOR GELS	44	PREPS & PRIMERS	66
GELPOLISH™ BASES	46	REMOVERS	68
TOP GELS	48	WIPING SOLUTIONS	68
ACRYLIC SYSTEMS	54	ADDITIONAL	70
MONOMERS	52	CUTICLE OILS	72
FRAGRANCES	54	OILS & CARE MISTS	74
POLYMERS	56		

A MESSAGE FROM REGULATORY AND QUALITY

Dear Valued Customer,

In today's rapidly changing global environment, cosmetic manufacturers and brand owners alike are navigating increasing uncertainty. Regulatory expectations continue to evolve across regions, and shifting geopolitical conditions are influencing supply chains, market access, and compliance requirements worldwide. Against this backdrop, we believe it is more important than ever to reaffirm our commitment to product quality, regulatory compliance, and transparent partnership with our customers.

At Keystone, quality and regulatory compliance are not simply requirements, they are foundational principles that guide how we develop, manufacture, test, and release every product. Our Quality and Regulatory teams work closely with Operations, R&D, and Supply Chain to ensure that products are made consistently, safely, and in accordance with applicable regulations in the markets we serve.

While regulatory frameworks can be complex, our role is to manage that complexity on your behalf. We continuously monitor regulatory changes, assess their potential impact, and proactively adapt our products and processes to maintain compliance. This includes alignment with chemical ingredient policies and maintenance of a robust quality system designed to meet both current and emerging expectations.

Equally important is our focus on risk management and continuous improvement. We regularly review our manufacturing controls, supplier qualifications, and testing programs to ensure they remain effective and resilient, even as external conditions change. These efforts help protect product integrity, support business continuity, and provide confidence that quality is built into every stage of production.

We understand that our customers rely on us not only as a manufacturer, but as a trusted partner. Our commitment is to communicate openly, respond thoughtfully, and collaborate with you to address challenges as they arise. By doing so, we aim to support your brands, safeguard consumers, and enable long-term success in a dynamic global marketplace.

Thank you for your continued trust in Keystone. We value our partnership and remain dedicated to upholding the highest standards of quality and regulatory compliance, today and in the future.

Sincerely,



GLORIA ZULICH

Director of Regulatory Affairs



GARY IANNECE

Vice President of Quality



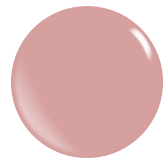


GEL SYSTEMS

BUILDER GELS

ECO UV/LED BUILDER GEL

ECO UV/LED Builder Gel is a lower heat gel with good adhesion, strength, and shine. These gels are self-leveling and easy to apply.



Pink



Transparent Pink



Clear

PROLINE GEL

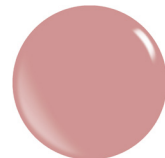
Proline Gels feature lower heat emission and superior adhesion. These self-leveling gels are ideal for sculpting over tips and forms. Thanks to their advanced self-leveling properties, Proline Gels provide complete control, ensuring no run-off into the cuticle area and leaving a smooth, even surface that minimizes filing.



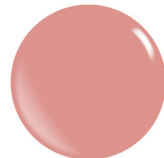
Cover Cashmere Pink



Cover Dusty Rose



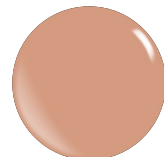
Cover Delicate Rose



Cover Elegance



Cool Cover Pink



Cover Sensual



Cover Coral



Pink



Clear



Milky White



FLEXR GEL

FlexR Gels are formulated as low heat, flexible builder gels, offering you the perfect balance of adhesion and workability. Providing the ultimate flexibility, allowing you to cater to diverse application needs with ease. Our collection features four viscosities, ensuring that you can rely on the exceptional performance from natural nail overlays to tip and form extensions.



VISCOSITIES

THINNER

THICKER

FLEXR GEL

1

Most leveling. Thinnest of the formulas. This gel fits into the category of a non-filing gel.

FLEXR GEL

2

Self levels will hold a smile line better than Flexr 1.

FLEXR GEL

3

Sculpting gel that self-levels.

FLEXR GEL

4

Sculpting gel that has a different texture than the other Flexr Gels. Becomes thinner/will self-level the more you work with it.

BUILDER GELS TECH CHART

	PROLINE CLEAR HF	FLEXR GEL 1	FLEXR GEL 2	FLEXR GEL 3	FLEXR GEL 4	ECO GEL UV/LED
EXTENSIONS	SHORT/MEDIUM	SHORT/MEDIUM	SHORT/MEDIUM	SHORT/MEDIUM	SHORT/MEDIUM	LONG
VISCOSITY	MEDIUM	LOW	MEDIUM	THICK	THIXOTROPIC	MEDIUM
SELF LEVELING	YES	YES	YES	NO	NO	YES
ONE PHASE	•	•	•	•	•	•
LOW HEAT	•	BEST	BEST	BEST	BEST	•
MULTIPLE COLORS AVAILABLE	•	•	•	•	•	•
EU LABEL FOR PROFESSIONAL USE ONLY	•	•	•	•	•	•
HEMA FREE	•	•	•	•	•	•
TPO FREE	•	•	•	•	•	•
VEGAN	•	•	•	•	•	•
CONTAINERIZATION						



WHITE GELS

listed in order of least to most opaque

FRENCH WHITE GELS

ULTRA WHITE

used to create creamy bright white tips

EXTREME WHITE

COMING SOON
used to create brilliant white tips and detailed nail art

FRENCH WHITE BUILDERS

SOFT WHITE

used for subtle white tips

ANGEL WHITE

used to create a subtle natural nail

UV

FLEXR CINDERELLA*

FLEXR 1
FLEXR 2
FLEXR 3
FLEXR 4

used to create milky overlays, babyboom and soft white tips

FLEXR WHITE*

FLEXR 1
FLEXR 2
FLEXR 3
FLEXR 4

used to create crisp white tips

PROLINE MILKY WHITE

used to create crisp white tips

OVERLAY GELS

EASY OFF OVERLAY GEL

Easy Off Overlay Gel is a natural nail overlay gel that has great flexibility and adhesion. It adds strength to the natural nails, allowing them to grow. Easy Off Overlay Gel can be soaked off in acrylic remover for easy removal.

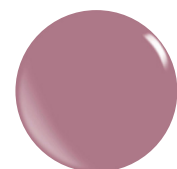
FIBER OVERLAY GEL WITH VITAMINS

Fiber Overlay Gel is a thicker overlay/base that contains synthetic fibers. This adhesive gel fills up ridges of the natural nail. Enjoy durability and beauty that lasts for 2 weeks. This gel is infused with Vitamin E and Calcium.



BUILD IT UP

Build It Up gels are low viscosity, soakable UV/LED gels for a natural nail overlay and short extensions.



Cover Pink



Pink Pretty



Baby Boom



Fairy Dust



Natural Pink



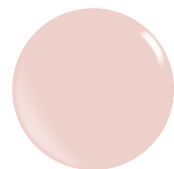
Sweet Pink



Pink Cloud



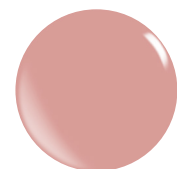
Shimmer Peach Puff



Cover Cream



Pink with Gold Flakes



Peach Bubble



Pale Pink



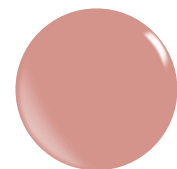
Nude



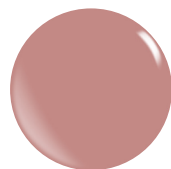
Strawberry Cream



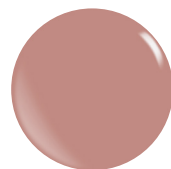
Nude Tan



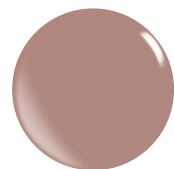
Summer Sweet



Marshmallow



Soft Maroon



Cover Tan



Warm Almond



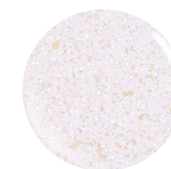
Clear



Pearl Pink



Mauve Rose



Sparkling Angels with Multi Flakes



Sparkling Angels



Pearl Gold



Soft Beige



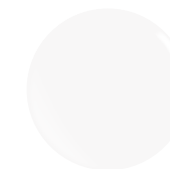
Latte



Cinderella



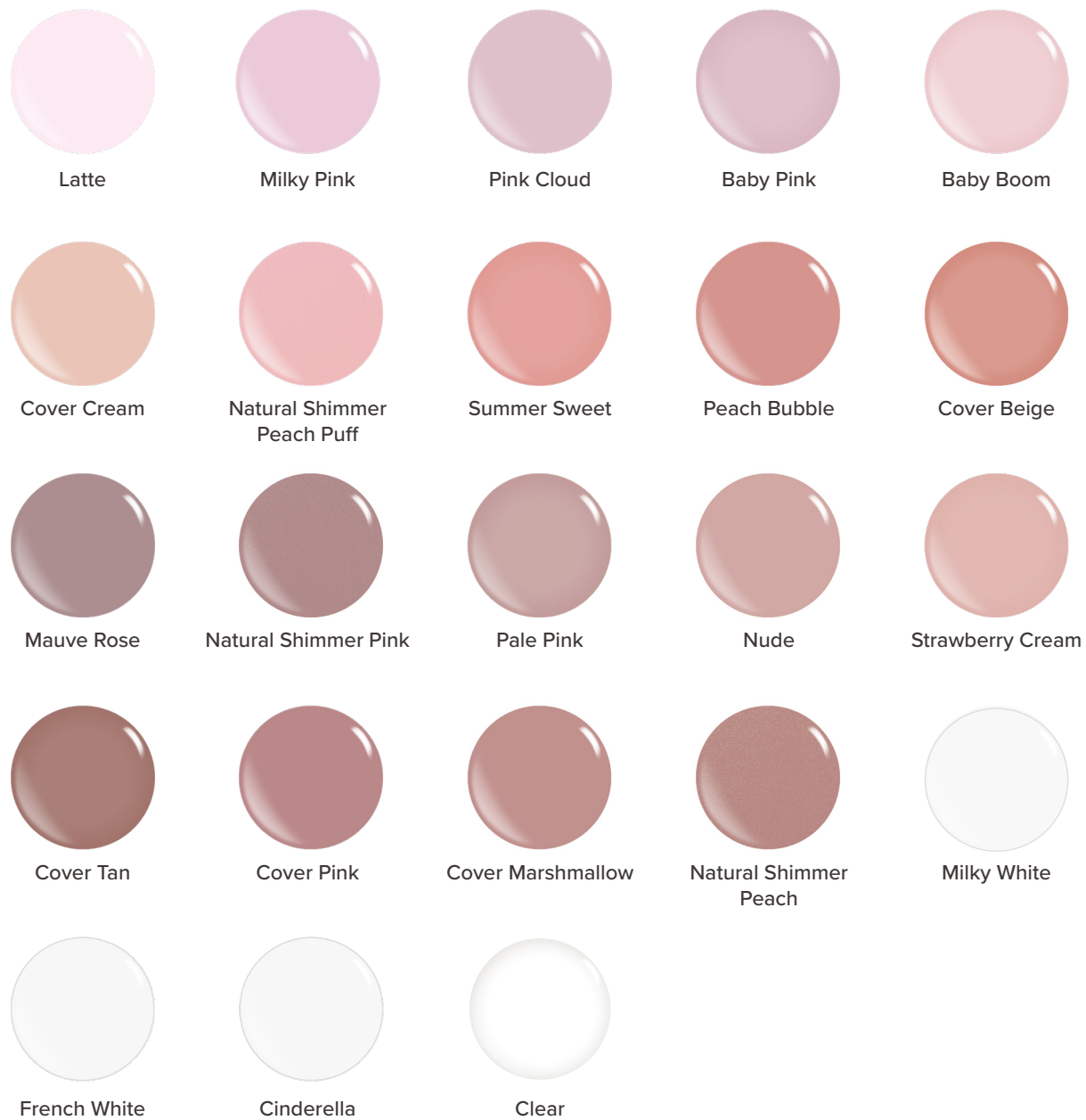
Cinderella SH



French White

GUMMY BASE GEL

This versatile formula is perfect for enhancing flatter nail shapes, creating a more flattering, sculpted look.



OVERLAY GELS TECH CHART

	HF BUILD IT UP STRONGER	FIBER OVERLAY GEL	GUMMY HF	EASY OFF OVERLAY GEL
EXTENSIONS	LONG	SHORT	SHORT	SHORT/ MEDIUM LAMP DEPENDENT
SELF LEVELING	•	•	•	•
ADHESION	VERY GOOD	EXCELLENT	EXCELLENT	GOOD
SOAKABILITY	•	•	•	BEST
MULTIPLE COLORS AVAILABLE	•	•	•	
EU LABEL FOR PROFESSIONAL USE ONLY		•	•	•
HEMA FREE	•	•	•	
TPO FREE	•	•	•	•
VEGAN	•	•	•	•
CONTAINERIZATION				

COLOR GELS

SUPREME GEL

Supreme Gels are high shine color gels that cure to a non-tack finish. They are highly pigmented, offering phenomenal coverage making them ideal for various nail art applications. Can be used over traditional or soak off builder gels and acrylics (in combination with a base gel).

GEL POLISH

GELPOLISH™

Introducing the industry's first vegan, TPO, HEMA and DI-HEMA free Gel Polish System.

This exciting leap forward in formulation presents added features and benefits applicable to both professional and retail nail markets.

Exceeding expectations in color coverage and soak off removal, this system can be elevated further by adding Rapid Release™ peel off base for non-soaking removal.

COLOURIZE GP

Second generation HEMA and TPO Free gel polish specifically formulated as a cost-sensitive gel polish, giving you a competitive advantage without sacrificing quality. Its universal colors are extremely versatile and work with any base or top coat. Available in two formulations.

TECH CHART

	SUPREME	GELPOLISH	COLOURIZE
  UV AND UV/LED			
 NO TACK/NO TOP COAT REQUIRED	•		
 SOAKABLE		•	•
 VISCOSITY	THICK (CAN BE USED FOR ART GEL)	THICK (PREFERRED IN EU)	THIN (PREFERRED IN US)
 EU LABEL FOR PROFESSIONAL USE ONLY	•		•
 HEMA FREE	•	•	•
 TPO FREE	•	•	•
 VEGAN	SHADE DEPENDENT	•	SHADE DEPENDENT
 CONTAINERIZATION			

GELPOLISH™ BASES

GELPOLISH™ (R-GP) BASE GEL

While the adhesion properties were increased for longer wear in the GelPolish Base formula, it is our fastest soaking system. GelPolish Base is vegan.

PRO GELPOLISH™ BASE/TOP GEL

The Pro GelPolish Base/Top is a versatile 2-in-1 formula for base and top gel polish applications. Simplify your routine without compromising on quality.

GUMMY PRO BASE

Suitable as a base gel for gel polish and builder gels. Recommended for clients requiring extra adhesion, especially when combined with Build It Up, Fiber Overlay, or Gummy Colors.

GUMMY CLEAR HF

Gummy Clear HF, a thicker, high-adhesion base that fills in ridges for a smooth, even surface. Also suitable as an overlay gel or to create short extensions with Vitamins E & B5.

PRO GELPOLISH™ BASE HEMA FREE

The Pro GelPolish Base formula strikes the perfect balance between durability and removal. Pro GelPolish Base is vegan.

INNOVATIVE FORMULA

RAPID RELEASE™ PEEL OFF BASE

Patent-pending, peelable base coat for quick removal of traditional gel polish systems. It peels off in seconds!

AIR DRY, NO LIGHT CURING

US PATENT US11445794
EU PATENT EP3393589

INNOVATIVE FORMULA

RAPID RELEASE™ SOAK OFF BASE

Developed to enhance the removal process of our traditional gel polish, this base coat decreases soak off time to approximately 5-7 minutes, and is removed cleanly with no scraping or filing required. This gentle, no fuss removal maintains the esthetics of healthy-looking nails after gel removal.

AIR DRY, NO LIGHT CURING

US PATENT US11445794
EU PATENT EP3393589

BASE GELS TECH CHART

	R-GP BASE GEL	PRO GELPOLISH BASE HF	PRO GELPOLISH BASE/TOP	GUMMY CLEAR HF	GUMMY PRO BASE	RAPID RELEASE PEEL OFF BASE	RAPID RELEASE SOAK OFF BASE
WEAR EXPECTATION	10 DAYS	14 DAYS	14 DAYS	21 DAYS	21 DAYS	UP TO 10 DAYS	UP TO 14 DAYS
REMOVAL	FAST	•	•	•	•	PEEL OFF	FAST
APPLICATION NOTES	CURABLE	CURABLE	CURABLE	CURABLE	CURABLE	AIR DRY	AIR DRY
FLAMMABLE						•	•
EU LABEL FOR PROFESSIONAL USE ONLY		•	•	•	•		
HEMA FREE	•	•		•		•	•
TPO FREE	•	•	•	•	•	•	•
VEGAN	•	•	•	•	•	•	•
CONTAINERIZATION							

TOP GELS

EO TOP GEL

EO Top Gel is a high-shine finishing gel that can be used over all gel and acrylic systems. EO Top Gel contains an optical brightener.

PRO GELPOLISH™ BASE/TOP GEL

The Pro GelPolish Base/Top is a versatile 2-in-1 formula for base and top gel polish applications. Simplify your routine without compromising on quality.

GELPOLISH™ (R-GP) TOP GEL

This Top Gel is a high-shine finishing gel. After curing, wipe with a High-Shine Wiping Solution to reveal the mirror finish.

MATTE TOP GEL R-GP

Matte Soak Off is a thin top gel designed to transform glossy nail color into a modern, trendy matte finish. After curing, wipe with a High-Shine Wiping Solution to reveal the matte look that lasts.

LUMIGLOSS TOP GEL NO TACK HEMA FREE

LumiGloss Top Gel No Tack HF is a thinner viscosity, low odor top gel formulated with a crystal-clear shine and lasting durability. Its non-yellowing, no-wipe formula is compatible with LED and Dual Wave lights. It offers maximum versatility across multiple systems.

TOP GELS TECH CHART

	EO TOP GEL EU	PRO GELPOLISH BASE/TOP GEL	GELPOLISH (R-GP) TOP GEL	MATTE TOP GEL R-GP	LUMIGLOSS NO TACK TOP GEL HF
COMPATIBLE SYSTEMS	Builder Gels, GP, CZ, Overlays, Acrylics, Natural Nails	Builder Gels, GP, CZ, Overlays, Acrylics, Natural Nails	Builder Gels, GP, CZ, Overlays, Acrylics	Builder Gels, GP, CZ, Overlays, Acrylics	Builder Gels, GP, CZ, Overlays, Acrylics
NO TACK					•
SOAKABILITY	•	•	•	•	FILE BEFORE SOAKING
VISCOSITY	THIN	THIN	THIN	THIN	THIN
UV ONLY					
OPTICAL BRIGHTENER	•				•
EU LABEL FOR PROFESSIONAL USE ONLY	•	•			•
HEMA FREE			•	•	•
TPO FREE	•	•	•	•	•
VEGAN	•	•	•	•	•
CONTAINERIZATION					



ACRYLIC SYSTEMS

MONOMERS

J-2 MONOMER

J-2 Monomer is an advanced blended EMA monomer formulated for increased adhesion in acrylic applications. UV inhibitors are added for increased color stability and plasticizers are added for durability.

THIS PRODUCT IS IDEAL FOR ADVANCED TECHNICIANS

G-3 MONOMER

G-3 Monomer is a standard blended EMA monomer that is perfect for retail applications or for use on clients with sensitive skin. It contains UV inhibitors and plasticizers for added durability and flexibility.

THIS PRODUCT IS IDEAL FOR STUDENTS AND NOVICE TECHNICIANS

R-1 MONOMER

R-1 Monomer is a blended EMA monomer system formulated to give moderate adhesion.

THIS PRODUCT IS IDEAL FOR ADVANCED TECHNICIANS AND IS SUITABLE FOR WARMER CLIMATES

J-2000 MONOMER

When used with P1 this is a fast set monomer with excellent adhesion.

**NOT FOR RESALE IN THE US
PROHIBITED FOR SALE IN CA**

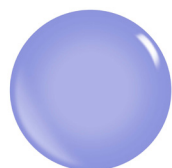
PL MONOMER

PL Monomer is a blended EMA monomer system formulated for clients who have acrylic lifting problems. Artificial nails applied with PL Monomer are long lasting and have a superior bond to the nail plate.

MONOMER COLORS AVAILABLE:



C0
Clear



C1
Blue



C2
Violet



C7
LT Violet



C16
Dark Blue



ACRYLIC LIQUIDS TECH CHART

	G-3	R1	PL	J-2	J2000
POLYMER PAIRING	POLYPURE, P3, P4, P6	POLYPURE, P3, P4, P6	POLYPURE, P3, P4, P6	POLYPURE, P3, P4, P6	P1
SETTING SPEED	SLOW TO MODERATE (POLYMER DEPENDENT)	MODERATE	MODERATE	FAST	FAST
EMA BASED	EMA	EMA	EMA	EMA	MMA
ADHESION	MODERATE	GOOD	GOOD	VERY GOOD	EXCELLENT
COLOR AVAILABLE	C0, C1, C2, C7	C1	C1, C16	C0, C1, C2, C7	C0, C2, C7
USE RECOMMENDATIONS	GOOD MONOMER FOR BEGINNERS, IDEAL FOR WARM CLIMATES	IDEAL FOR WARM CLIMATES	IDEAL FOR WARM CLIMATES	NOT RECOMMENDED FOR WARM CLIMATES	
BULK/DRUM STABILITY*	BEST	MODERATE	MODERATE	LEAST	BEST
DMPT FREE	YES	YES	YES	YES	YES
VEGAN	•	•	•	•	•

* Refers to storage conditions and proper headspace in filled packaging. Some formulas are more sensitive than others.

FRAGRANCE

FRAGRANCE DROPS

By using a few drops of fragrance, you can decrease the odor of traditional monomer with pleasurable scents!

MTO OR CUSTOMIZATION FOR FRAGRANCE MAY BE AVAILABLE



APPLE



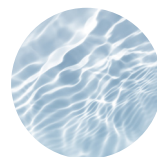
CHERRY ALMOND



PEACH



LAVENDER



FRESH & CLEAN

FRAGRANCE MONOMER

Traditional monomers with enjoyable, aromatic experience!

MTO OR CUSTOMIZATION FOR FRAGRANCE MAY BE AVAILABLE



MANGO



LILAC



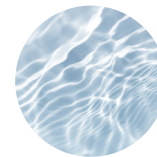
PUMPKIN SPICE



COFFEE



LAVENDER



FRESH & CLEAN



POLYMERS

P1 POLYMER

P1 is a slow-set copolymer with excellent adhesion, clarity, hardness and strength.

THIS POLYMER SYSTEM SELF-LEVELS AND IS IDEAL FOR NOVICE TECHNICIANS, STUDENTS OR TECHNICIANS WHO PREFER A LONGER WORK TIME

P3 POLYMER

P3 is a fast-set homopolymer with good adhesion, excellent clarity and ideal flexibility.

THIS POLYMER SYSTEM OFFERS EXCELLENT CONTROL FOR EXPERIENCED TECHNICIANS. P3 POLYMERS ARE IDEAL FOR COMPETITION SPEED APPLICATIONS

P4 POLYMER

P4 is a medium-set copolymer with good adhesion, excellent clarity and strength.

THIS POLYMER SYSTEM IS IDEAL FOR EXPERIENCED TECHNICIANS AND TECHNICIANS WORKING IN WARMER CLIMATES

P6 POLYMER

P6 is a slow/medium-set copolymer with good adhesion, excellent clarity and strength.

THIS POLYMER SYSTEM CAN BE USED AS AN ALTERNATIVE WINTER SYSTEM FOR P1 USERS DESIRING FASTER SET-UP IN COLD CLIMATES

POLYPURE POLYMER

Polypure is a fast-set homopolymer with good adhesion, excellent clarity and ideal flexibility.

THIS POLYMER SYSTEM OFFERS SUPERIOR CONTROL FOR EXPERT TECHNICIANS. PP POLYMERS ARE EXCELLENT FOR COMPETITION SPEED APPLICATIONS

COVER POLYMER

This collection of unique, colored polymers gives the possibility of creating natural and extreme extensions of the natural nail bed. These powders can be used to hide nail imperfections, extend the natural nail bed or make perfect artificial nails.

COLORED POLYMER

These highly pigmented powders are strong, durable and provide long-lasting color for various color application needs.

AVAILABLE IN **SEVERAL COLORS** CAN BE USED WITH GLUE OR GEL-TYPE DIP TECHNIQUE

POLYMERS TECH CHART

	P1	P3	P4	P6	POLYPURE
 EMA:MMA RATIO	70:30	95:5	85:15	80:20	100% EMA
 MONOMER PAIRING	G3, R1, PL, J2 J2000	G3, R1, PL, J2	G3, R1, PL, J2	G3, R1, PL, J2	G3, R1, PL, J2
 SETTING TIME WITH EMA	SLOW	FAST	MEDIUM	MEDIUM	FAST
 SETTING TIME WITH MMA	FAST				
 ADHESION	EXCELLENT	GOOD	VERY GOOD	VERY GOOD	GOOD
 STRENGTH/HARDNESS	VERY HARD	HARD	HARD	HARD	HARD
 VEGAN	•	•	•	•	•



COATINGS

BASE COATS

GEL RESCUE

This soothing treatment includes bamboo extract, which supports nail health, reduces ridges and improves luster to natural nails that have experienced damage. It can also be used as a base coat.



TOP COATS

SPEED SHINE TOP COAT

Speed Shine Top Coat is a fast drying top coat sealer.

MEGA GLOSS TOP COAT

This top coat finishes to a high shine and prevents polish from chipping or peeling.

KEYSHIELD

Keyshield is a moderate viscosity top coat that delivers a high-shine finish. This fast-drying top coat creates a very durable coating. Can be cured in UV for a stronger finish.

DIAMOND COAT

Diamond Coat is a fast-drying, non-yellowing top coat. The top coat finishes to a high-shine and can be used over polish or artificial nails.

ALL ITEMS ARE 5-FREE (NO FORMALDEHYDE, FORMALDEHYDE RESIN (TFR), TOLUENE, CAMPHOR OR DBP) UNLESS OTHERWISE NOTED.
ALL TOP AND BASE COATS ARE CUSTOMIZABLE TO MEET PERFORMANCE AND MARKETING NEEDS.



ACCESSORIES

NAIL ART

FOIL TRANSFER AIR DRY BASE COAT

Air Dry Foil Transfer Base Coat is specifically formulated to transfer nail art designs from the foil directly to your nails without cyanoacrylate or LED/UV Gel. Ideal for creating your own nail art design.

US PATENT US11445794
EU PATENT EP3393589

STAMPING GEL HF

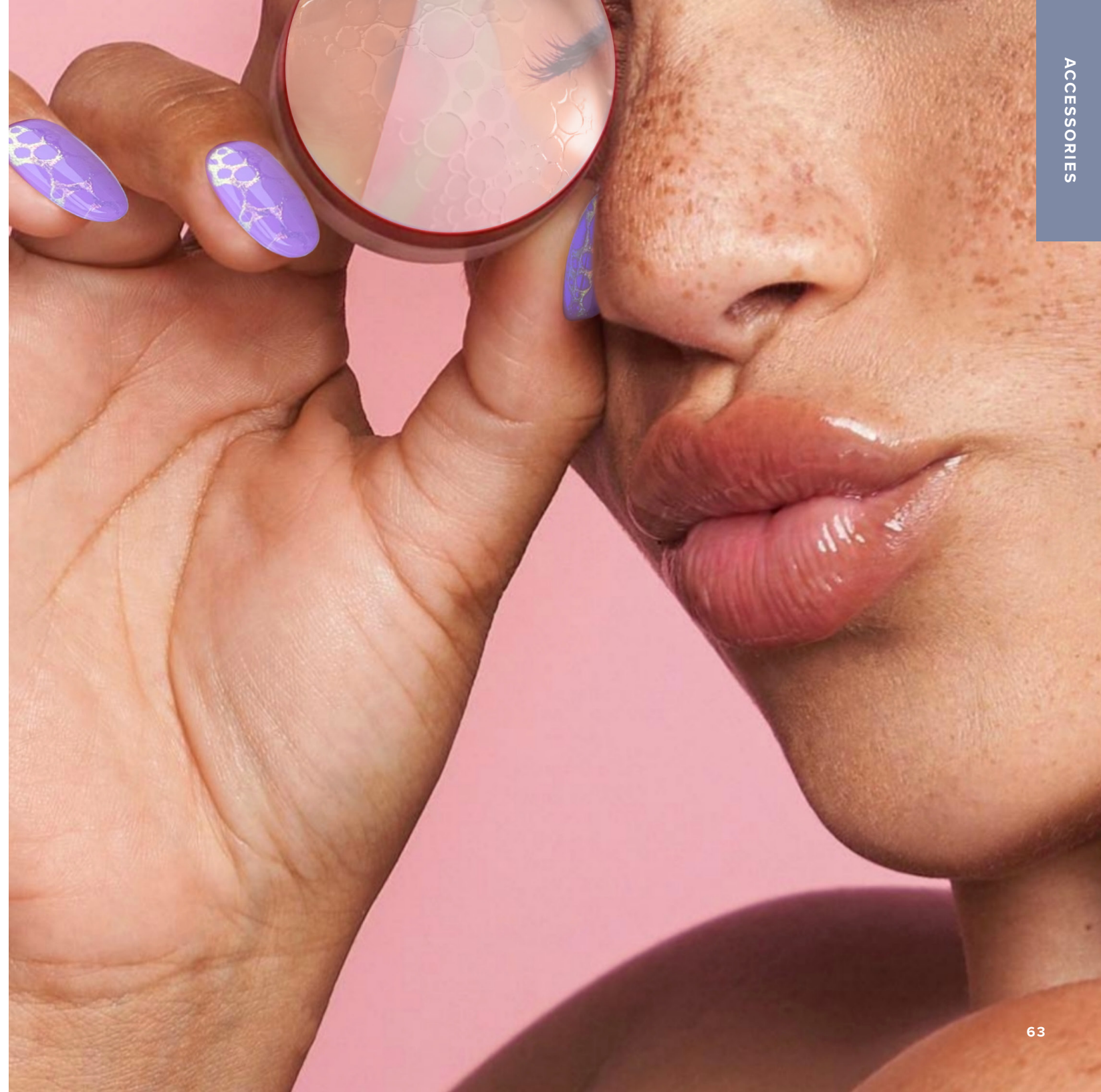
Stamping Gel HF is a clear gel that can be used in combination with your stamping plates and selections of pigments and chromes. After stamping the design onto the nail, rub chromes and pigments into the stamping gel to reveal your creation.

SUPREME GEL

Supreme Gels cure to a flawless, non-tack finish, delivering exceptional coverage perfect for intricate designs, layering effects, and stunning sugar art. Compatible with traditional and soak-off builder gels as well as acrylics (when used with a base gel), they fit seamlessly into any professional workflow.

BLOOMING GEL

Use this unique gel to create beautiful spreading effects! Ideal to create watercolor art.





PREPS & PRIMERS

B-2 NAIL PREP

B-2 Nail Prep is used to gently dehydrate the natural nails to remove any natural oils prior to artificial nail applications. Use before primers for better adhesion of gels, acrylics and glued on tips.

FLEXBOND HF

HF Ultrabond Primer is a low-odor, methacrylic acid-free primers used to promote adhesion to the natural nails. Same performance and expectations as the original Ultrabond now available in a HEMA free version.

WORKS PERFECTLY WITH ALL
GEL AND ACRYLIC SYSTEMS

ALL VERSIONS OF ULTRABOND ARE
LOW IN ODOR AND DO NOT BURN
THE NATURAL NAILS OR CUTICLES.

ULTRABOND

Our Ultrabond Primers are low-odor, methacrylic acid-free primers used to promote adhesion to the natural nails. It is much safer for natural nails than acid primers without sacrificing performance.

WORKS PERFECTLY WITH ALL
GEL AND ACRYLIC SYSTEMS

ALL VERSIONS OF ULTRABOND ARE
LOW IN ODOR AND DO NOT BURN
THE NATURAL NAILS OR CUTICLES.

ULTRABOND THIN STRONG WITH VITAMINS

A slightly thicker version of Ultrabond original with increased adhesion and the added benefits of vitamins B5 and E.

WORKS PERFECTLY WITH ALL
GEL AND ACRYLIC SYSTEMS

ALL VERSIONS OF ULTRABOND ARE
LOW IN ODOR AND DO NOT BURN THE
NATURAL NAILS OR CUTICLES.

ULTRABOND TRIPLE STRONG WITH VITAMINS

A slightly thicker version of the Ultrabond Thin Strong with triple the strength adhesion, and the added benefits of vitamins B5 and E.

WORKS PERFECTLY WITH ALL
GEL AND ACRYLIC SYSTEMS

ALL VERSIONS OF ULTRABOND ARE
LOW IN ODOR AND DO NOT BURN
THE NATURAL NAILS OR CUTICLES.

REMOVERS

NON-ACETONE POLISH REMOVER

Non-Acetone Polish Remover quickly removes polish without over-drying the nails. This product has a soft lavender scent.

VEGAN ACETONE REMOVER

This acetone remover gently removes professional and retail nail coatings without damaging the natural nail. We retained the conditioning benefits found in our original version with lanolin oil by utilizing non-animal derived raw materials.

AVAILABLE IN **CLEAR** AND **BLUE**

WIPING SOLUTIONS

HIGH-SHINE WIPING SOLUTION

Used to remove tacky surface residues from all cured gel systems with shine-booster technology.





ADDITIONAL

KEY-DRY POLISH DRYER

Key-Dry Polish Dryer can be used in a spray bottle or dropper to accelerate the dry time of air-dry lacquers.

B-4 BRUSH CLEANER

B-4 Brush Cleaner is designed to remove excess acrylic and gel residue from nail brushes without damaging the brush bristle.

TOP KOTE THINNER

Top Kote Thinner can be used to dilute nail polishes, top coats or base coats that have thickened with age.

NO LINES

No Lines is applied during acrylic refills to eliminate any visible file lines. This material blends old and new acrylic to make it appear brand new.

CAN BE USED AS A TIP BLENDER

B-1 CLEANSING SOLUTION

B-1 Cleansing Solution is used to disinfect hands and working materials.

CLEAN START

Clean start is an all-in-one liquid to clean the surface of the natural nails before any application, to remove the tacky layer aftercuring gels or gentle wipe off any product residue from your brush.

EASE SOLUTION

A non-yellowing and odorless solution formula that allows for a frictionless application and shaping of high viscosity gels. Ease solution allows the product to stay exactly where you want it on the nails while keeping the product from sticking to the brush.

BOOSTER LIQUID

Booster Liquid is used to customize the performance of your monomer; it enhances adhesion and strength, accelerates the setting time, and prevents crystallization in cold climates. It can also be used as a Gel thinner.

CUTICLE OILS

CUTICLE OIL

Cuticle Oil is a conditioning treatment used to moisturize dry, damaged cuticles and to promote strong, flexible nails.

AVAILABLE IN SEVERAL STOCK COLORS AND FRAGRANCES



ALMOND



TEA TREE



PINEAPPLE



LEMON



PEACH



FREESIA



COCONUT



WITH JOJOBA
& VITAMIN E

COMPLETE CARE 2.0

This is a luxurious natural oil enriched with meticulously crafted organic oils. This formula contains Olive Oil, Avocado Oil and Jojoba Oil for their unique natural benefits.

This non-greasy treatment absorbs quickly into the skin, nails and cuticles, leaving the skin feeling soft and conditioned.



keystone[®]
cosmetics & sciences

EUROPE

BATAVENWEG 5-7
5349BC OSS, THE NETHERLANDS
+31 412 693 100
SALES@KEYSTONE-EUROPE.NL
KEYSTONECOSMETICS.COM

USA

480 S DEMOCRAT ROAD
GIBBSTOWN, NJ 08027
+1 856 663 4700
INFO@KRANDP.COM
KEYSTONECOSMETICS.COM